



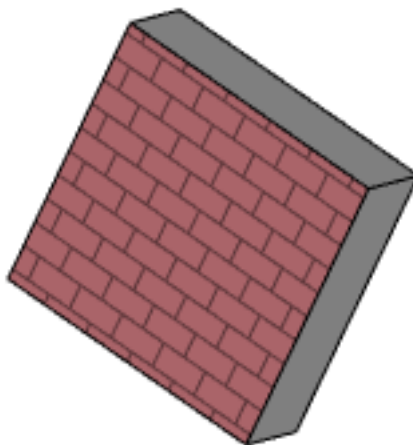
REVIT PURE PRESENTS

PAMPHLETS



ISSUE #17 / SUMMER 2020

SLANTED WALLS



revitpure.com

© Copyright 2020 - BIM Pure productions
by: Nicolas Catellier, Architect

PAMPHLETS COLLECTION



ISSUE #1
WORKSETS



ISSUE #2
SCHEDULES



ISSUE #3
PHASES



ISSUE #4
LINK CAD



ISSUE #5
FILTERS



ISSUE #6
VIRTUAL REALITY



ISSUE #7
3D VIEWS



ISSUE #8
PLAN NOTES



ISSUE #9
COORDINATES



ISSUE #10
SCOPE BOXES



ISSUE #11
FINISHES



ISSUE #12
LINE WEIGHTS

PAMPHLETS COLLECTION



ISSUE #13
DOORS



ISSUE #14
SHARED SITES



ISSUE #15
pyREVIT



ISSUE #16
FREE ADD-INS



ISSUE #17
SLANTED WALLS



PAMPHLETS

ISSUE #17 / SUMMER 2020 / SLANTED WALLS

WHAT IS THIS “PAMPHLET” ?

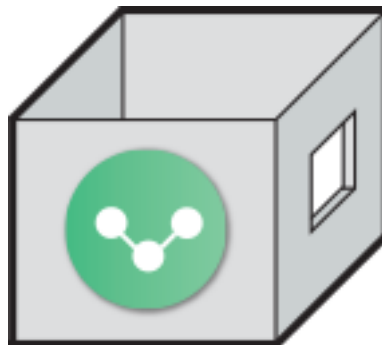
Revit Pure Pamphlets are published 4 times a year by email. Each edition covers a very specific Revit theme. We like to pick themes that are complex and confusing. Our job is to make these topics simple for you.

WHY SLANTED WALLS

Usually, pamphlets are used to go deep on a specific topic. They can go from, 30, 40 even up to 50 pages.

This is a mini-pamphlet that focus on a specific new feature from Revit 2021: Slanted Walls.

Why a mini-pamphlet? Because we are hard at work on the upcoming learning package that will be called **MANAGE**. It's going to be amazing. More details in the coming months.



For now, let's get started with slanted walls.



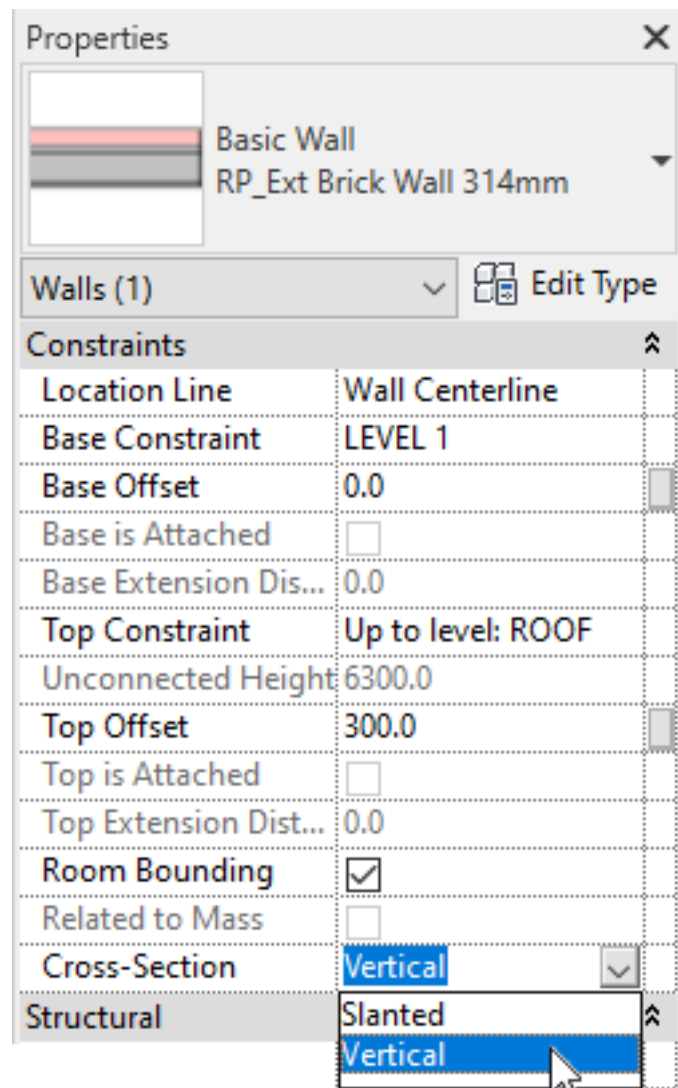
PAMPHLETS

ISSUE #17 / SUMMER 2020 / SLANTED WALLS

8 TIPS TO UNDERSTAND SLANTED WALLS

1- SET WALL CROSS-SECTION TO SLANTED

To get started with slanted walls, switch the Cross-Section parameter from Vertical to Slanted.



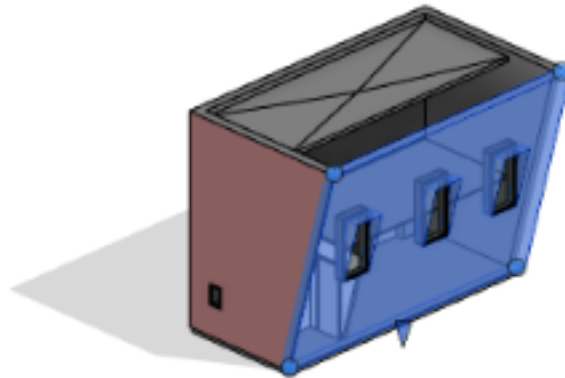


PAMPHLETS

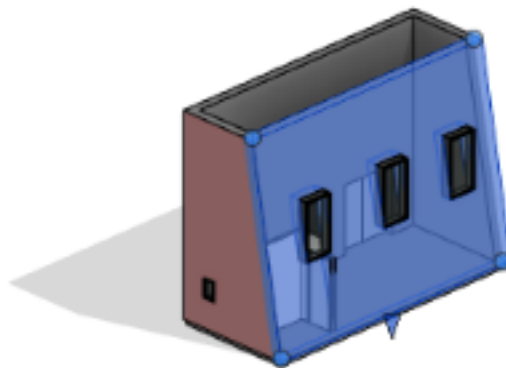
ISSUE #17 / SUMMER 2020 / SLANTED WALLS

2- ADJUST THE ANGLE FROM VERTICAL PARAMETER

Once the Slanted parameter has been assigned to Cross-Section, you will have access to the Angle From Vertical parameter. Pick a value between -90° and 90° .



Cross-Section	Slanted
Angle From Vertical	15.00°



Cross-Section	Slanted
Angle From Vertical	-10.00°

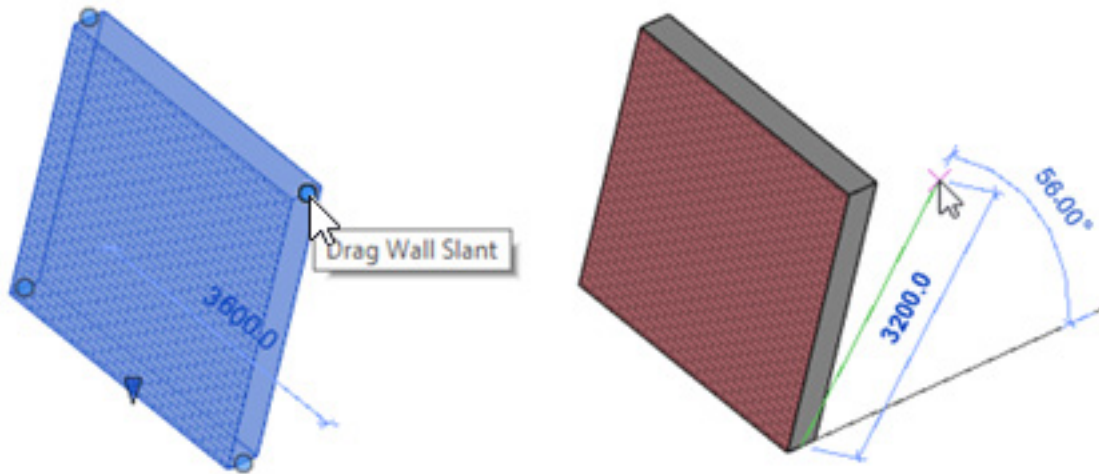


PAMPHLETS

ISSUE #17 / SUMMER 2020 / SLANTED WALLS

3- ADJUST THE ANGLE BY DRAGGING BLUE DOT

You can also modify the angle by moving the boundary point of the wall.



DRAG WALL POINT TO MODIFY SLANT ANGLE

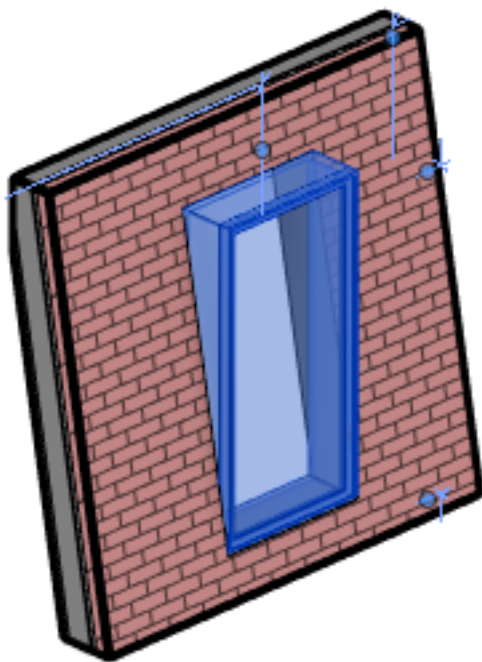


PAMPHLETS

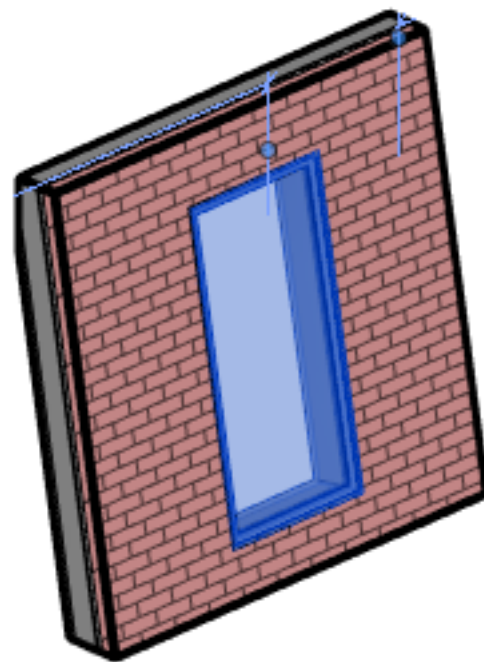
ISSUE #17 / SUMMER 2020 / SLANTED WALLS

4- ADJUST THE ORIENTATION PARAMETER FOR WINDOWS AND DOORS

By default, windows and doors will be vertical. You can adjust the Orientation setting in the instance properties. When you set it to “Slanted”, the window will match the angle of the wall.



Orientation Vertical



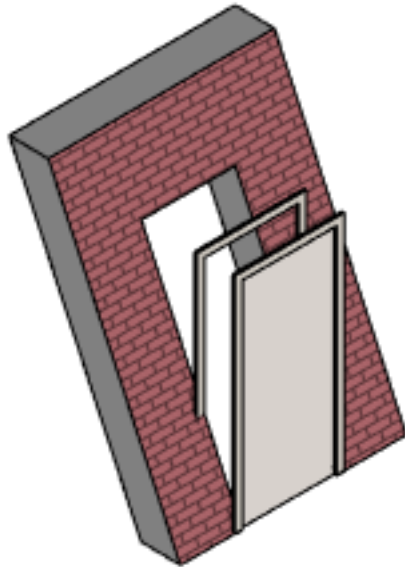
Orientation Slanted



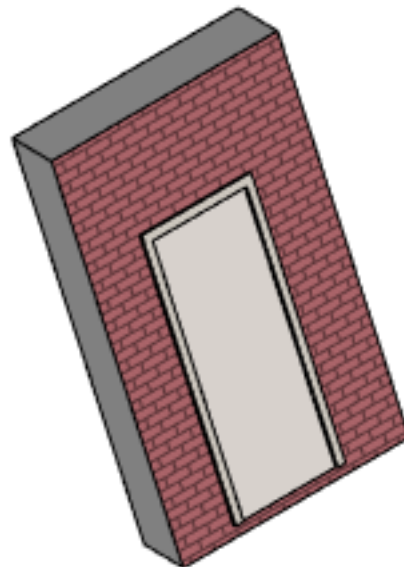
PAMPHLETS

ISSUE #17 / SUMMER 2020 / SLANTED WALLS

You can apply the same principle to doors, although slanted doors don't make much sense.



Orientation Vertical



Orientation Slanted

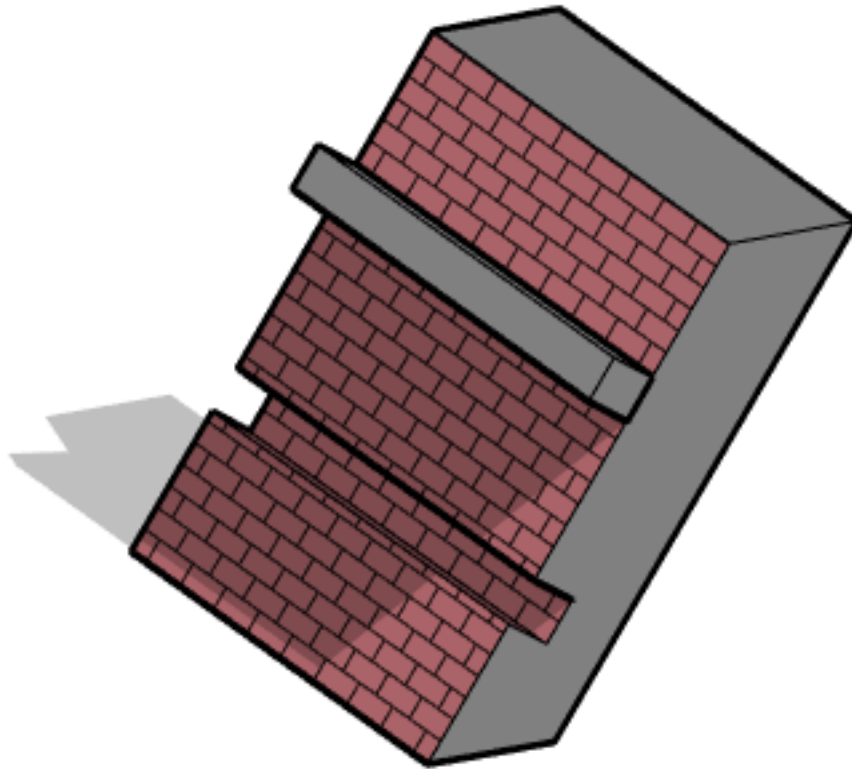


PAMPHLETS

ISSUE #17 / SUMMER 2020 / SLANTED WALLS

5- SWEEPS AND REVEALS WILL MATCH WALL ANGLE

When creating sweeps and reveals on a slanted walls, the elements will match the angle of the wall.



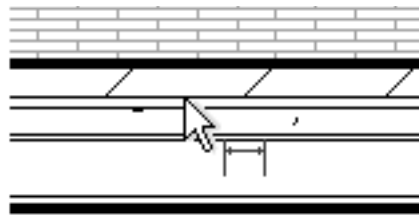


PAMPHLETS

ISSUE #17 / SUMMER 2020 / SLANTED WALLS

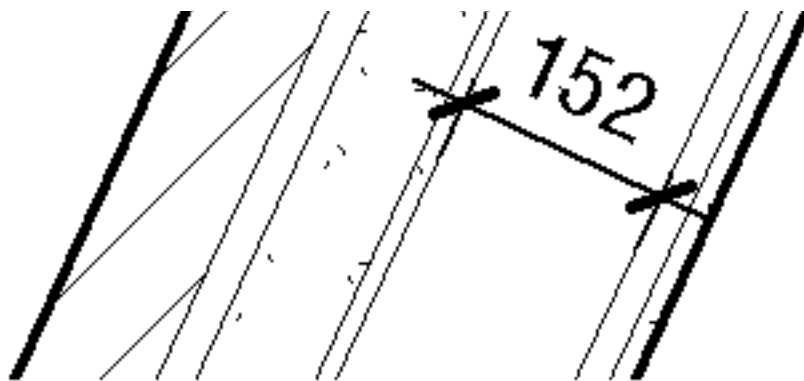
6- YOU CAN ADD DIMENSIONS IN SECTIONS BUT NOT IN PLAN VIEW

If you go to a plan view and set the Detail Level to Fine, you can see all the layers of the wall. For some reason, you can't add dimensions to specific layers of a slanted wall. Even adding dimensions to the wall is a little complicated.



CAN'T SELECT WALL LAYERS

However, if you create a section, assigning dimensions to all layers of the wall will be possible.



SECTION VIEW: ADD DIMENSIONS TO INDIVIDUAL LAYERS



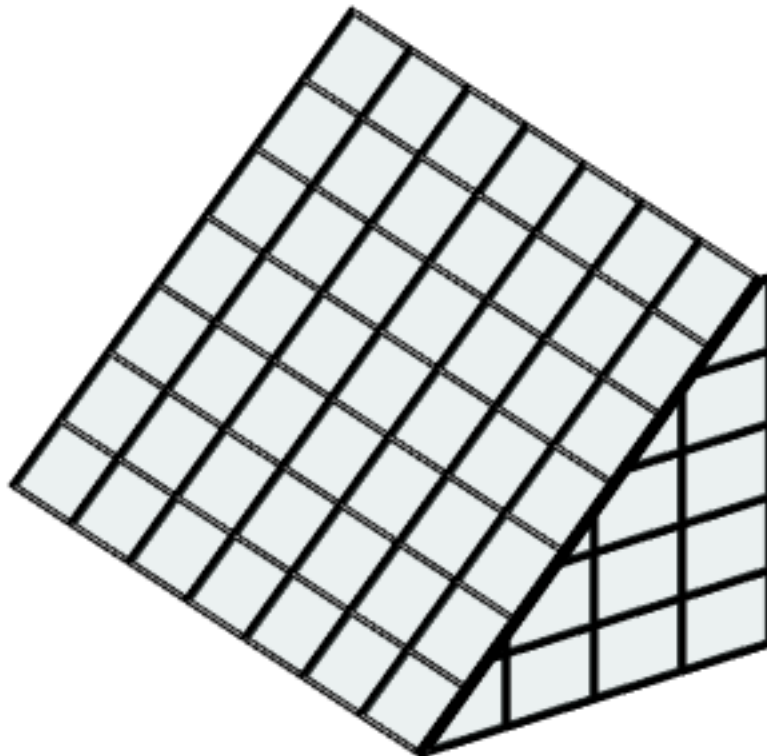
PAMPHLETS

ISSUE #17 / SUMMER 2020 / SLANTED WALLS

7- USE SLANTED WALLS WITH CURTAIN WALLS

One of the most useful and intriguing way to use the Slanted Walls feature is with Curtain Walls. Like you see, even perpendicular curtain walls will match the slope.

Previously, you had to use the Curtain System feature or the Mass feature. While it worked, having a simplified workflow with the Slanted Walls feature is greatly appreciated.



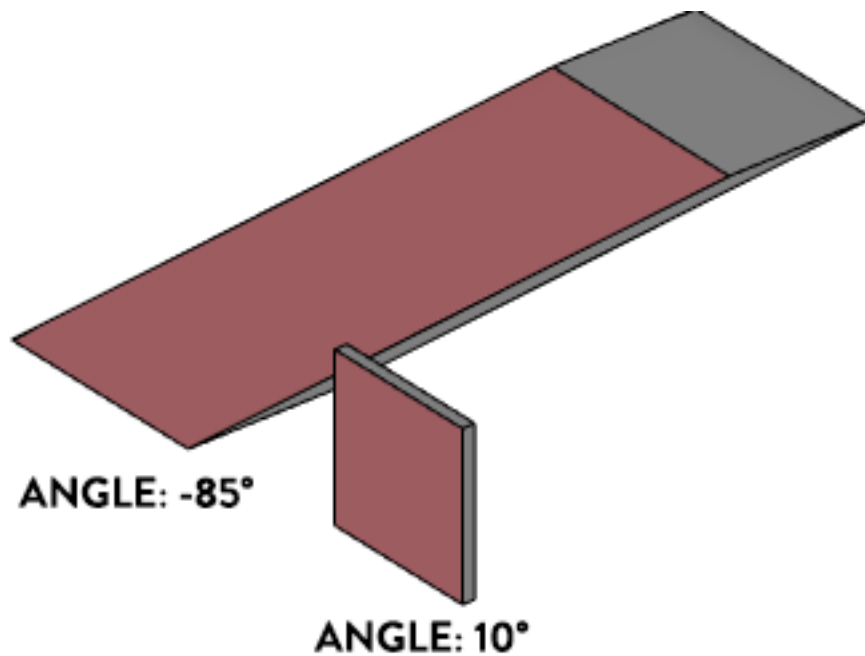


PAMPHLETS

ISSUE #17 / SUMMER 2020 / SLANTED WALLS

8- SET AN ANGLE BETWEEN -90° AND 90°

The angle you can set for slanted walls has to be between -90 ° and 90° degrees. As you can see in the image below, high values will produce weird looking result. Most slanted walls will be used on walls with a slope below 45 °.





PAMPHLETS

ISSUE #17 / SUMMER 2020 / SLANTED WALLS

THANKS FOR READING!

As always, send your thoughts to nick@revitpure.com. I read and answer all emails. Let me know what theme you want explored for the next edition.

REVIT PURE PACKAGES



BASICS



DESIGN

Did you like the simple, efficient style of this pamphlet? That means you will love our learning packages! **BASICS** will help you learn all the essential tools of Revit. Check it out at: revitpure.com/basics. **DESIGN** will teach you how to create beautiful presentation documents using Revit. Check it out at revitpure.com/design.

Both packages contain an eBook and video tutorials, but also bonus content such as templates and Revit families. Use code **learn** to get 15% off on any package.