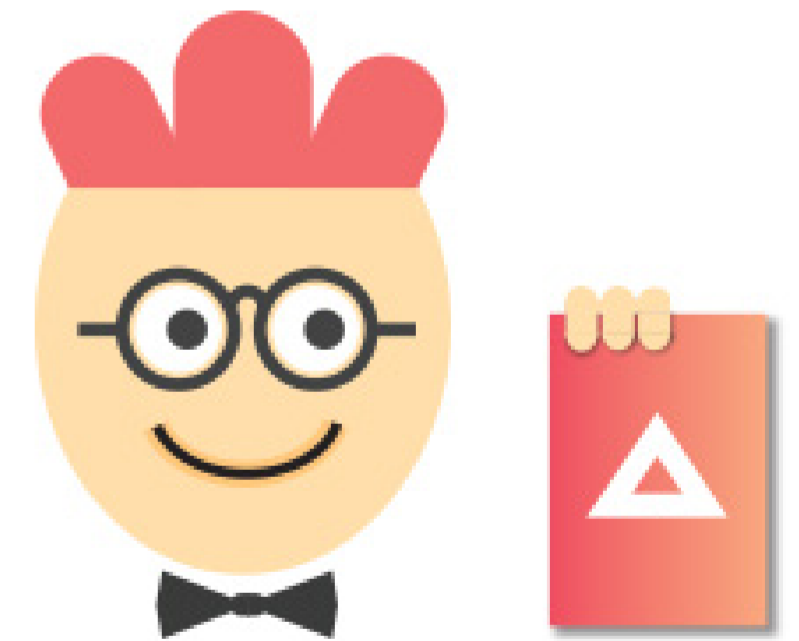


DESIGN LEARNING PACKAGE



- eBOOK
- VIDEO TUTORIALS
- REVIT TEMPLATE (FOR PRESENTATION)
- ENTOURAGE FAMILIES
- TREE FAMILIES
- PARKING LINE FAMILY
- MATERIALS READY FOR RENDERINGS
- PRESENTATION VIEW TEMPLATES



REVIT PURE LIVE #009
NICOLAS CATELLIER

UNDERSTANDING GRAPHICS

HIERARCHY OF GRAPHICAL TOOLS

HIGHEST PRIORITY

 1- LINEWORK

 2- SILHOUETTES EDGES

 3- OVERRIDE BY ELEMENT

 4- VIEW FILTERS

 5- PHASING

 6- VISIBILITY/GRAPHICS

 7- OBJECT STYLE

LOWEST PRIORITY



REVIT PURE LIVE #009
NICOLAS CATELLIER

UNDERSTANDING GRAPHICS

GRAPHIC DISPLAY STRATEGY

1- SETTINGS THAT AFFECT THE WHOLE PROJECT



OBJECT STYLE



PHASES

2- SETTINGS THAT AFFECT A SINGLE VIEW



VISIBILITY /
GRAPHICS



VIEW FILTERS



SILHOUETTE
EDGES

3- SETTINGS THAT AFFECT A SINGLE ELEMENT



LINEWORK



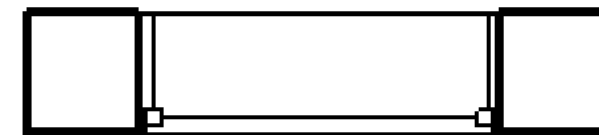
OVERRIDE BY
ELEMENT



REVIT PURE LIVE #009
NICOLAS CATELLIER



7- OBJECT STYLES



Model Objects Annotation Objects Analytical Model Objects Imported Objects

Filter list: <show all> ▾

Category	Line Weight		Line Color	Line Pattern	Material
	Projection	Cut			
[-] Windows	1	2	■ Black	Solid	
..... Frame/Mullion	1	2	■ Black	Solid	
..... Glass	1	2	■ Black	Solid	
..... Hidden Lines	2	2	■ RGB 000-	RP-Dash	
..... Opening	1	2	■ Black	Solid	
..... Sill/Head	1	2	■ Black	Solid	







OBJECT STYLES: CONTROL ALL ELEMENTS IN ALL VIEWS










REVIT PURE LIVE #009
NICOLAS CATELLIER

6- VISIBILITY / GRAPHICS



Visibility	Cut		Halftone	Detail Level
	Lines	Patterns		
<input checked="" type="checkbox"/> Windows			<input type="checkbox"/>	By View
<input checked="" type="checkbox"/> Frame/Mullion				
<input checked="" type="checkbox"/> Glass				



Visibility	Cut		Halftone	Detail Level
	Lines	Patterns		
<input checked="" type="checkbox"/> Windows			<input type="checkbox"/>	By View
<input type="checkbox"/> Frame/Mullion				
<input checked="" type="checkbox"/> Glass				





5- PHASING



Phase Status	Projection/Surface		Cut		Halftone	Material
	Lines	Patterns	Lines	Patterns		
Existing				Hidden	<input type="checkbox"/>	RP-Existing
Demolished				Hidden	<input type="checkbox"/>	RP-Demo
New					<input type="checkbox"/>	RP-New
Temporary					<input type="checkbox"/>	RP-Temporary

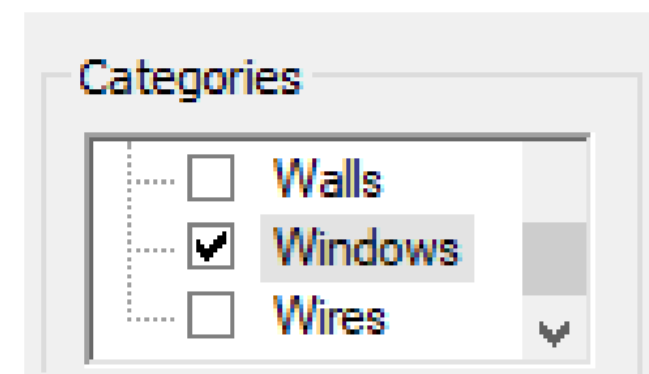
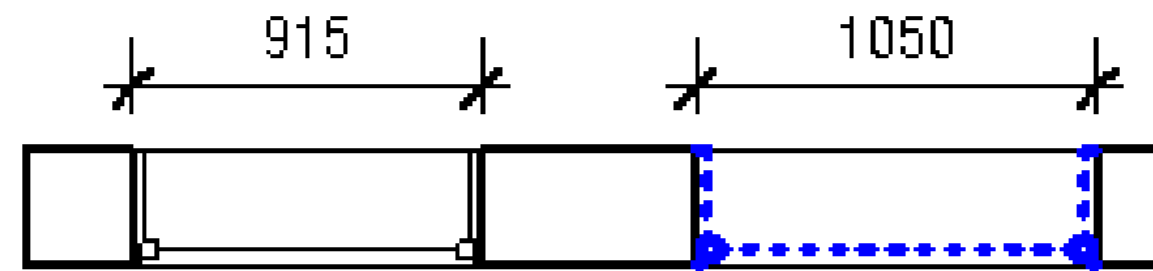
PHASES OVERRIDE: ALL NEW CUT ELEMENTS BECOME RED



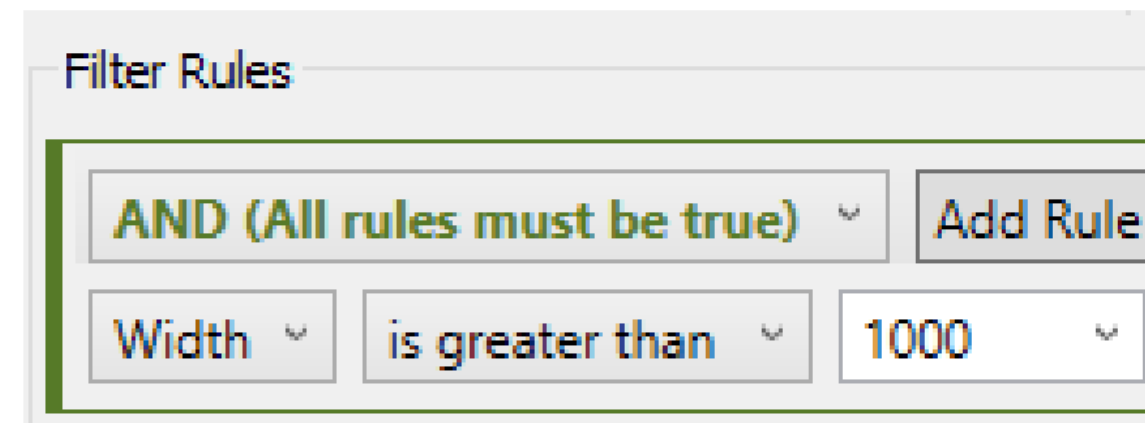
REVIT PURE LIVE #009
NICOLAS CATELLIER



4- VIEW FILTERS



1- SELECT CATEGORY



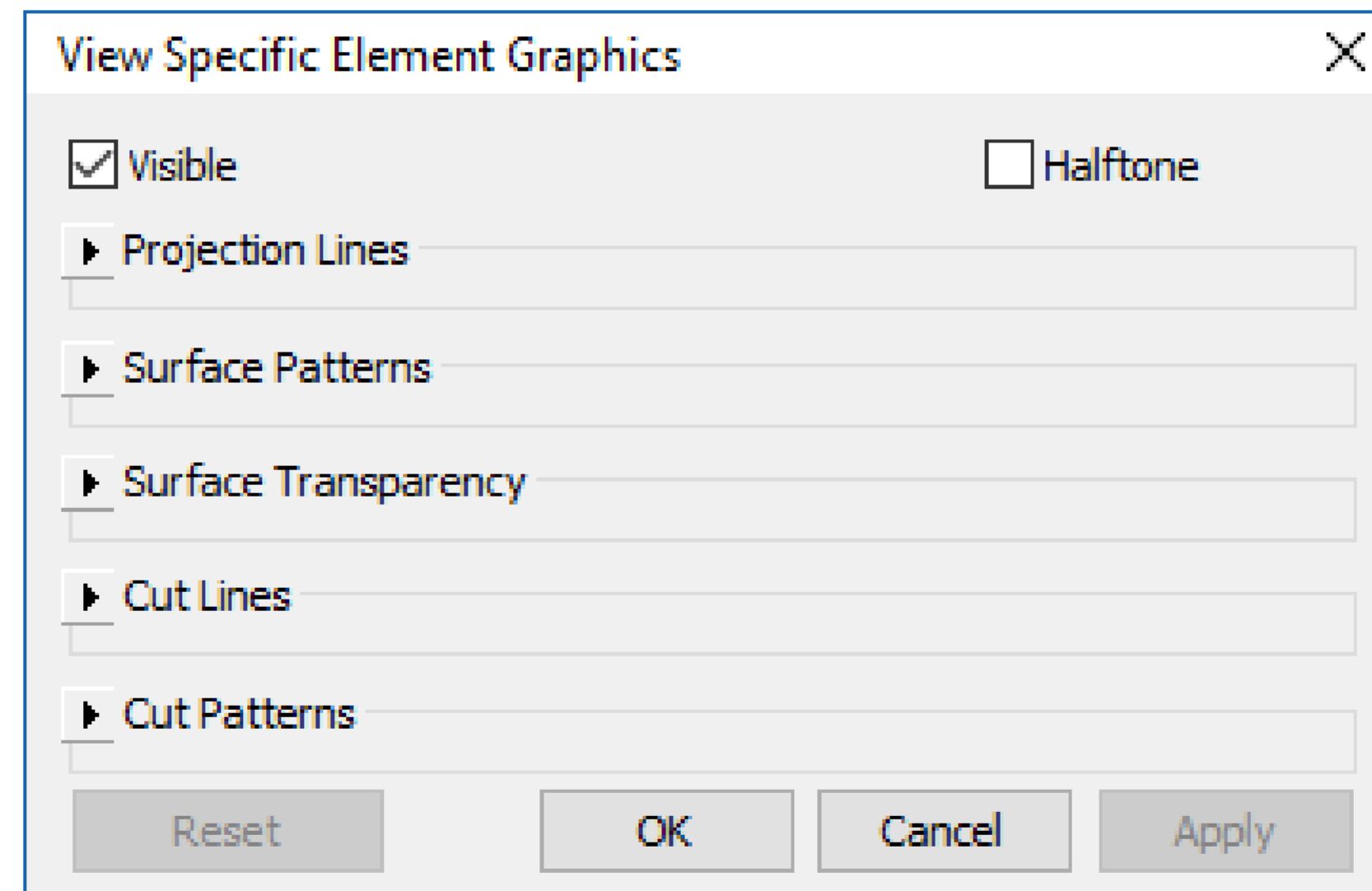
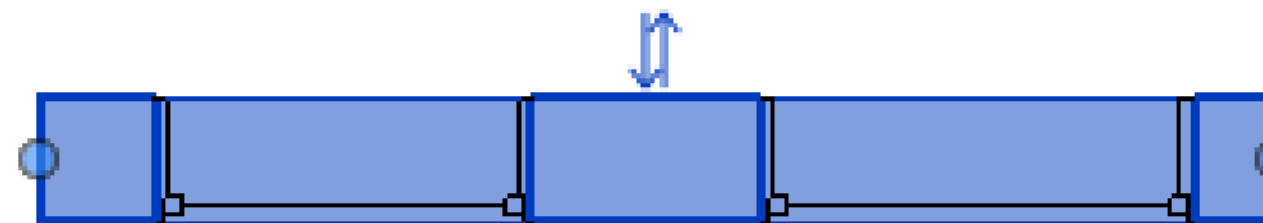
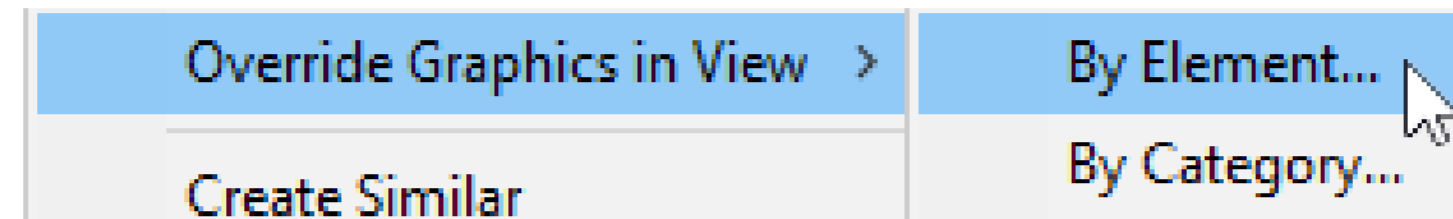
2- SET RULES

Model Categories		Annotation Categories		Analytical Model Categories		Filters
Name	Visibility	Cut		Halftone		
		Lines	Patterns			
1000mm Windows	<input checked="" type="checkbox"/>	<input checked="" type="checkbox"/>	<input type="checkbox"/>	<input type="checkbox"/>		

3- SET GRAPHIC OVERRIDES



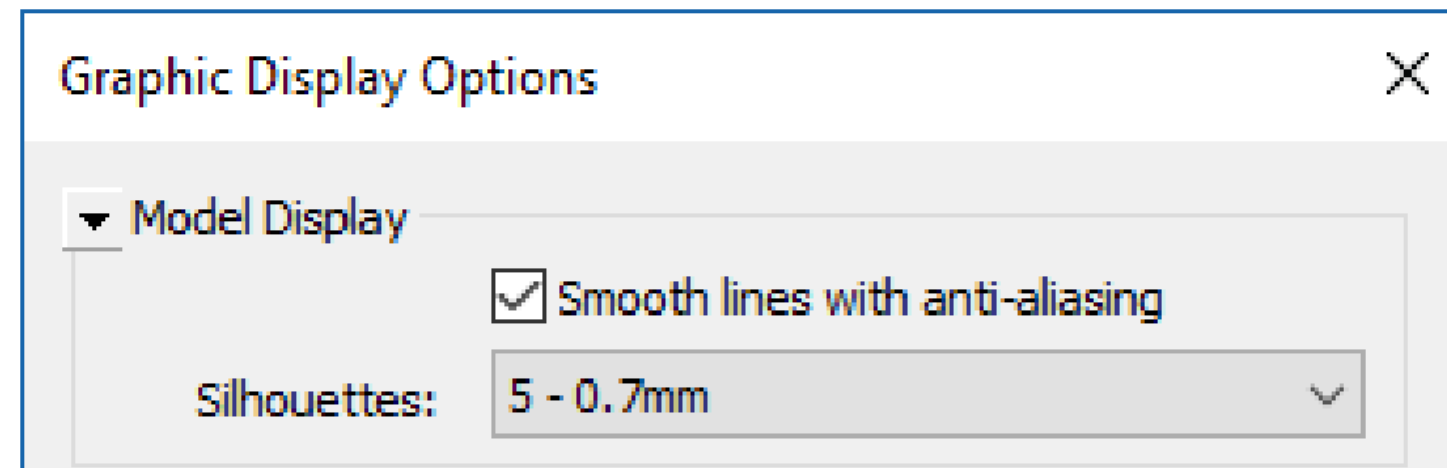
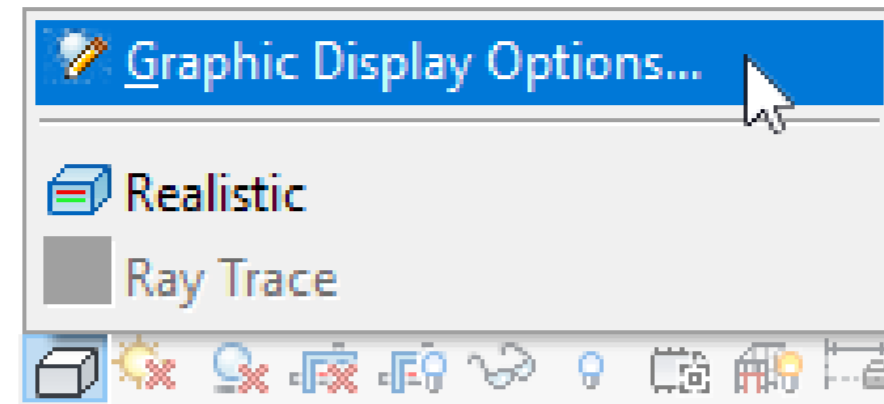
3- OVERRIDE BY ELEMENT



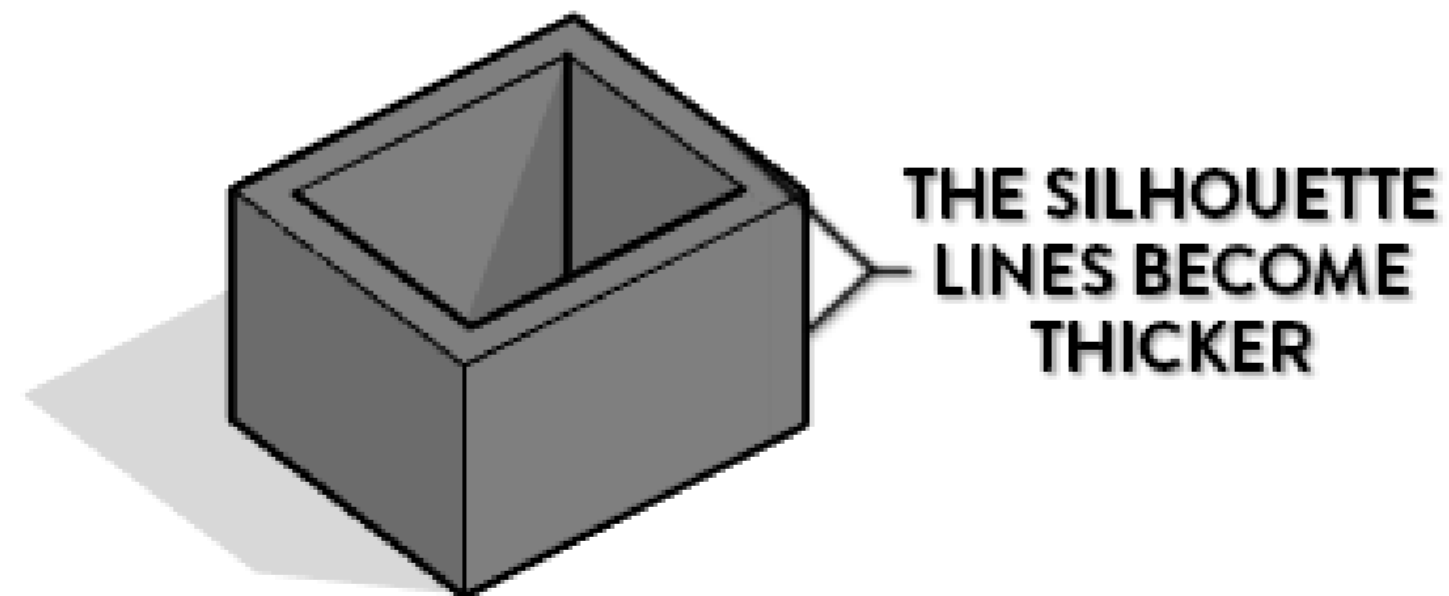
REVIT PURE LIVE #009
NICOLAS CATELLIER



2- SILHOUETTE EDGES



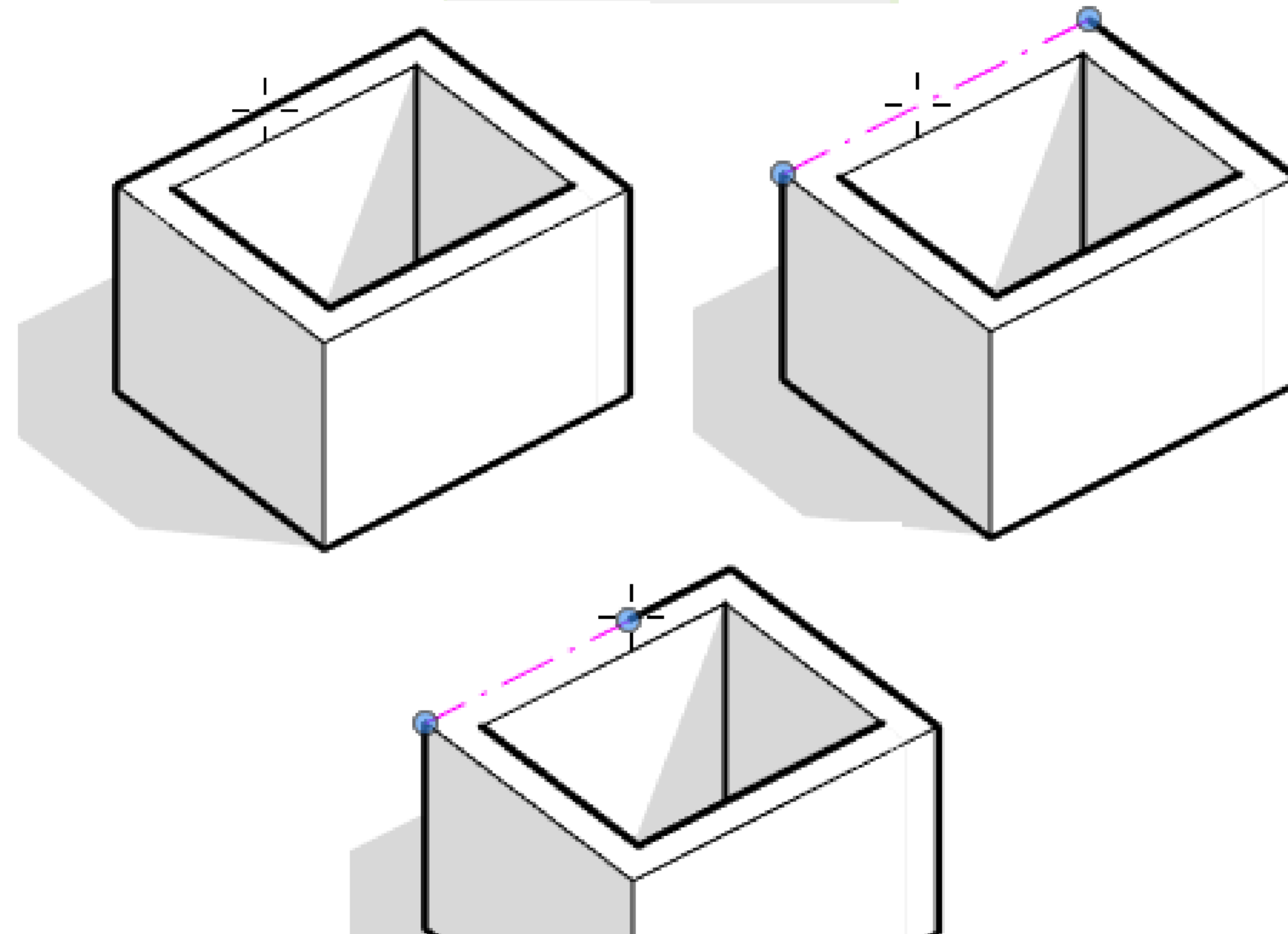
SET A SILHOUETTES LIFESTYLE



REVIT PURE LIVE #009
NICOLAS CATELLIER

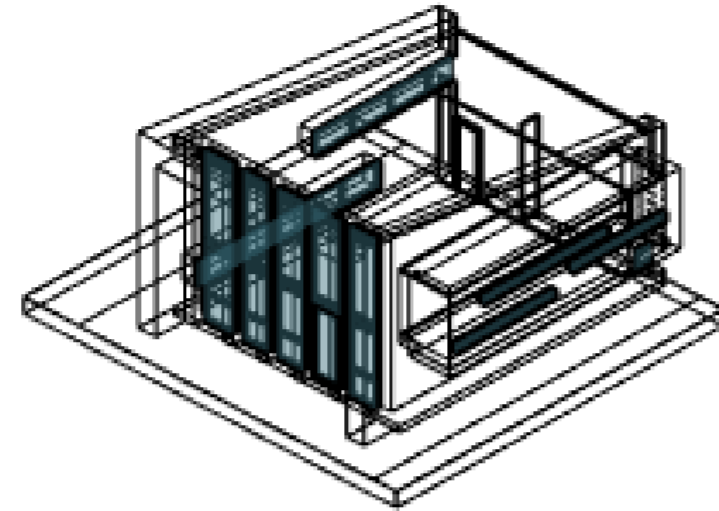


1- LINEWORK

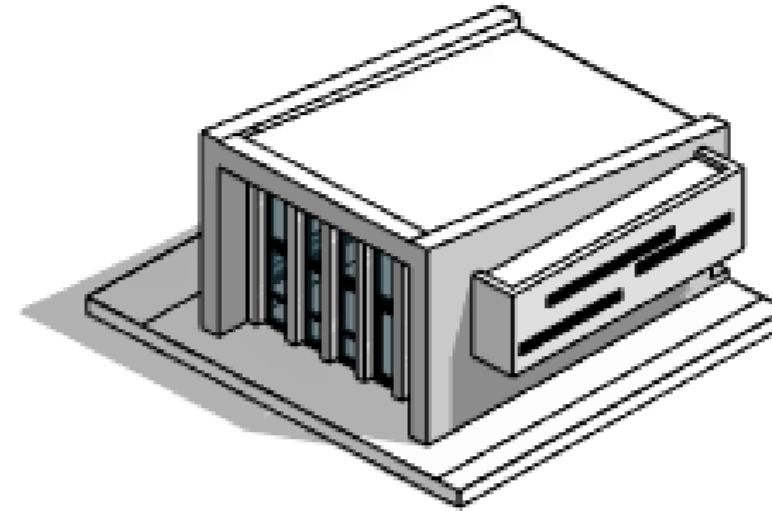


REVIT PURE LIVE #009
NICOLAS CATELLIER

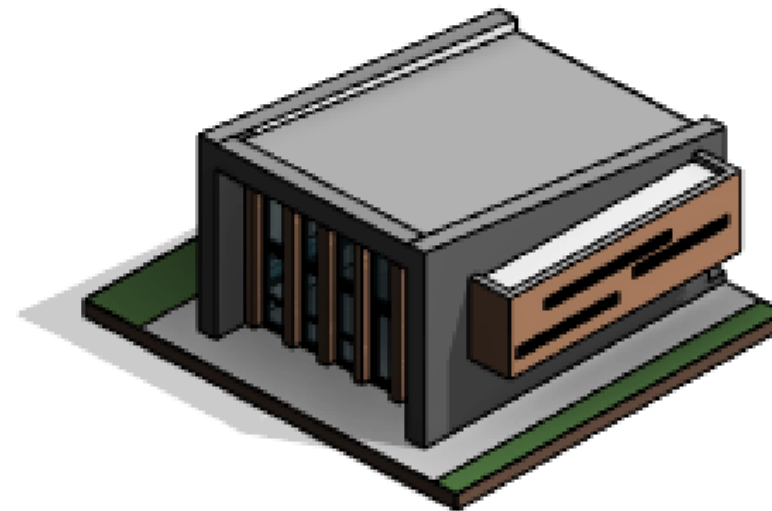
VISUAL STYLES



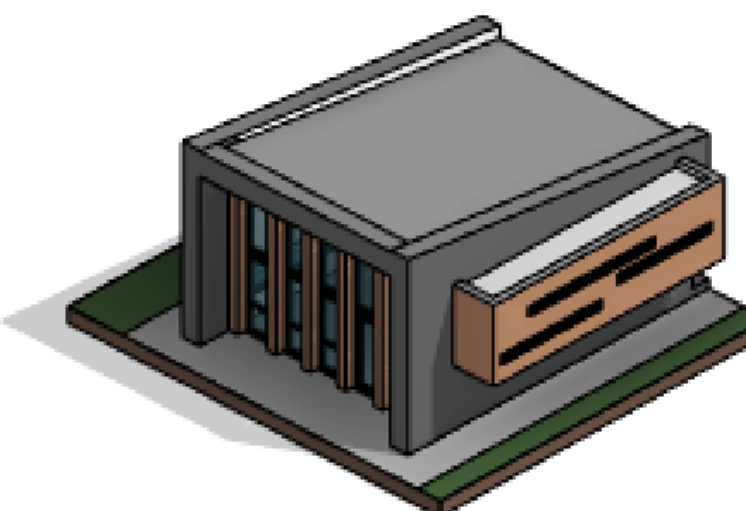
 WIREFRAME



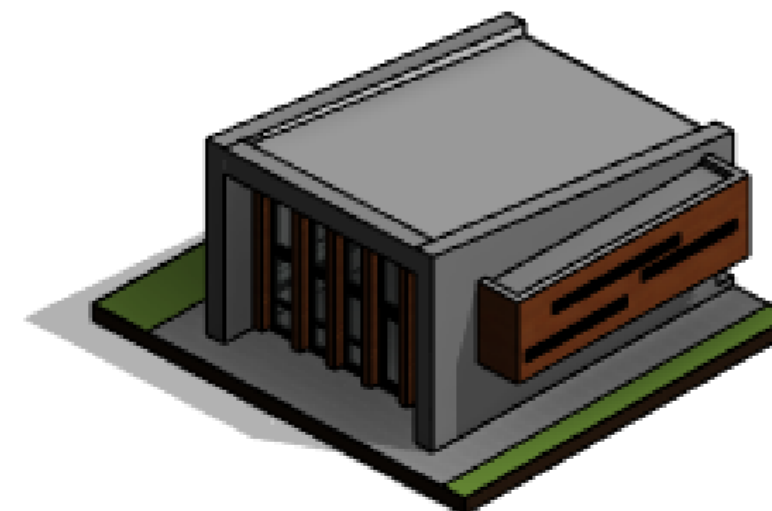
 HIDDEN LINES



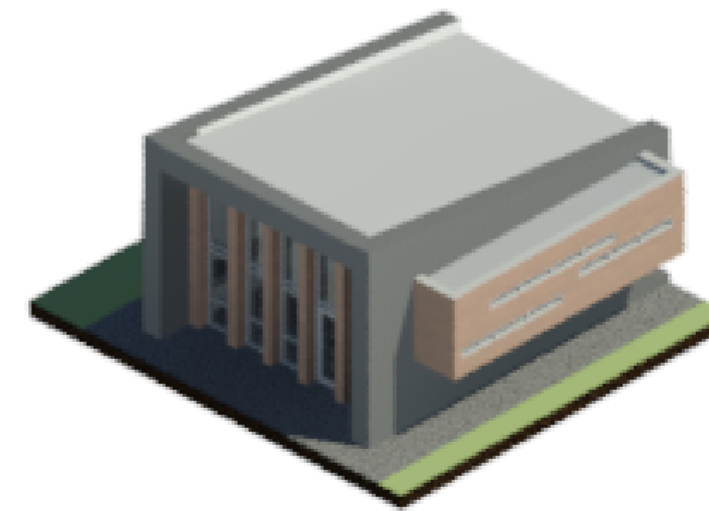
 SHADED



 CONSISTENT COLORS



 REALISTIC

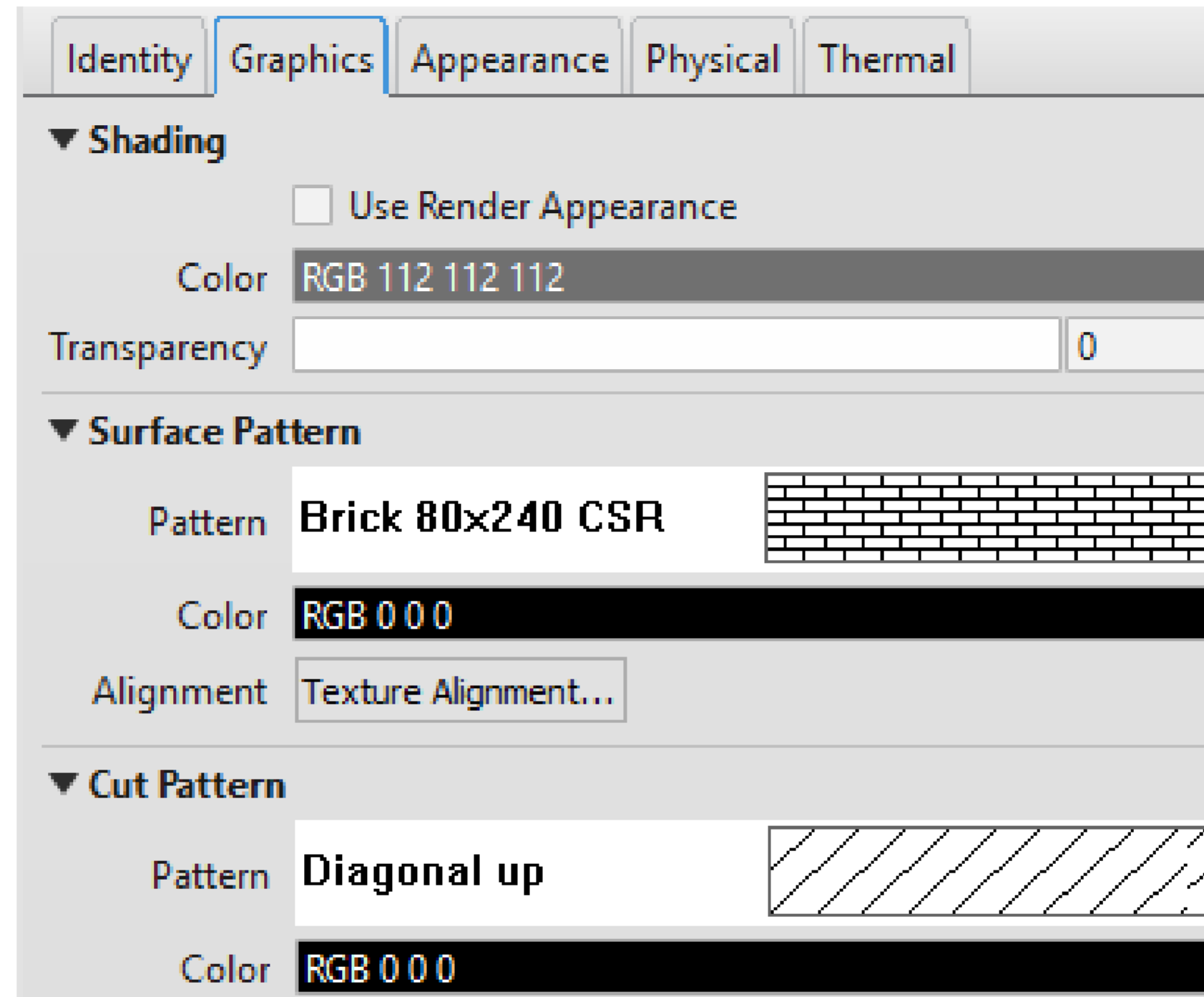


 RAYTRACE



REVIT PURE LIVE #009
NICOLAS CATELLIER

GRAPHICS VS APPEARANCE



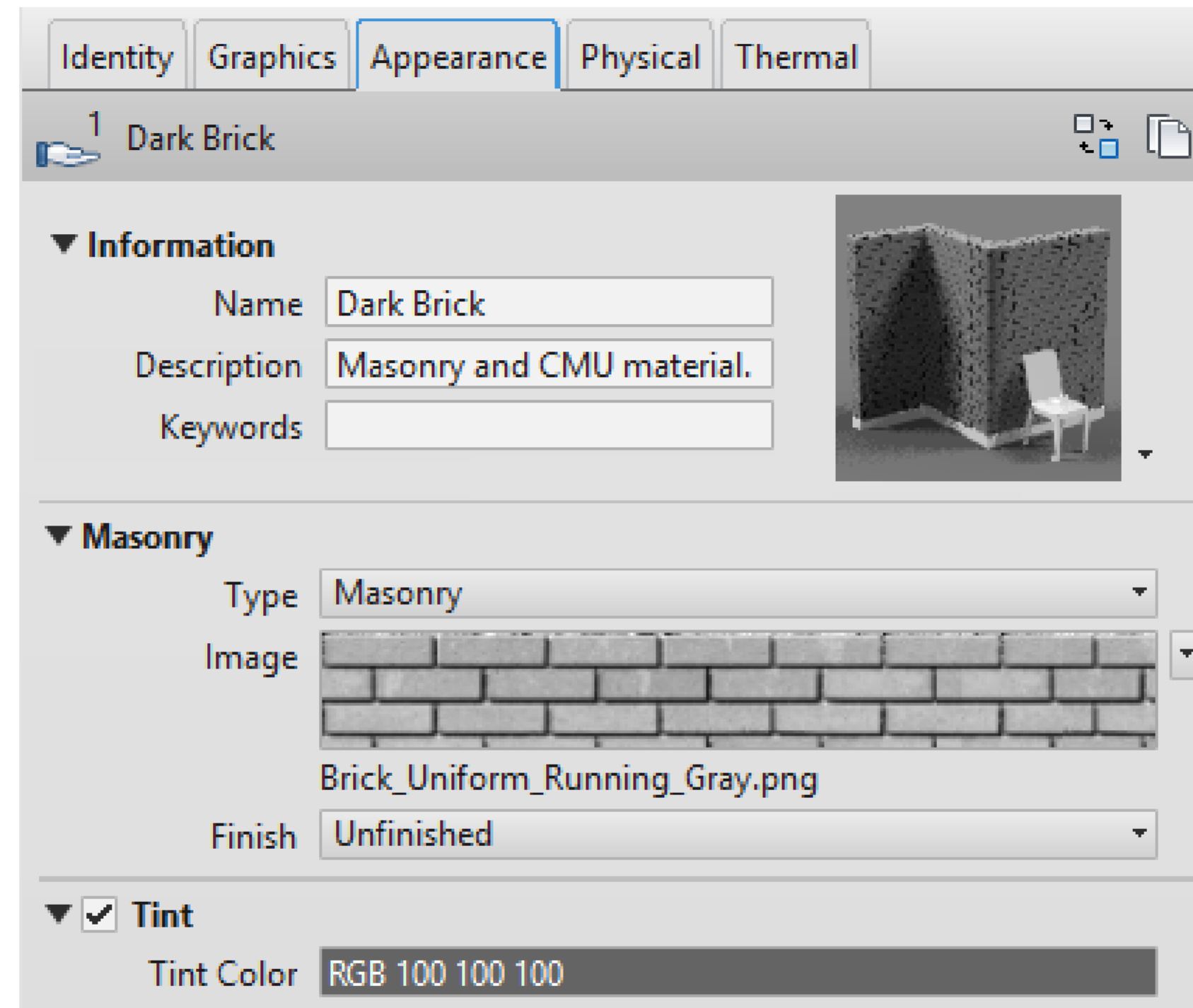
GRAPHICS USED FOR:

- Wireframe
- Hidden Lines
- Shaded
- Consistent Colors



REVIT PURE LIVE #009
NICOLAS CATELLIER

GRAPHICS VS APPEARANCE



APPEARANCE USED FOR:

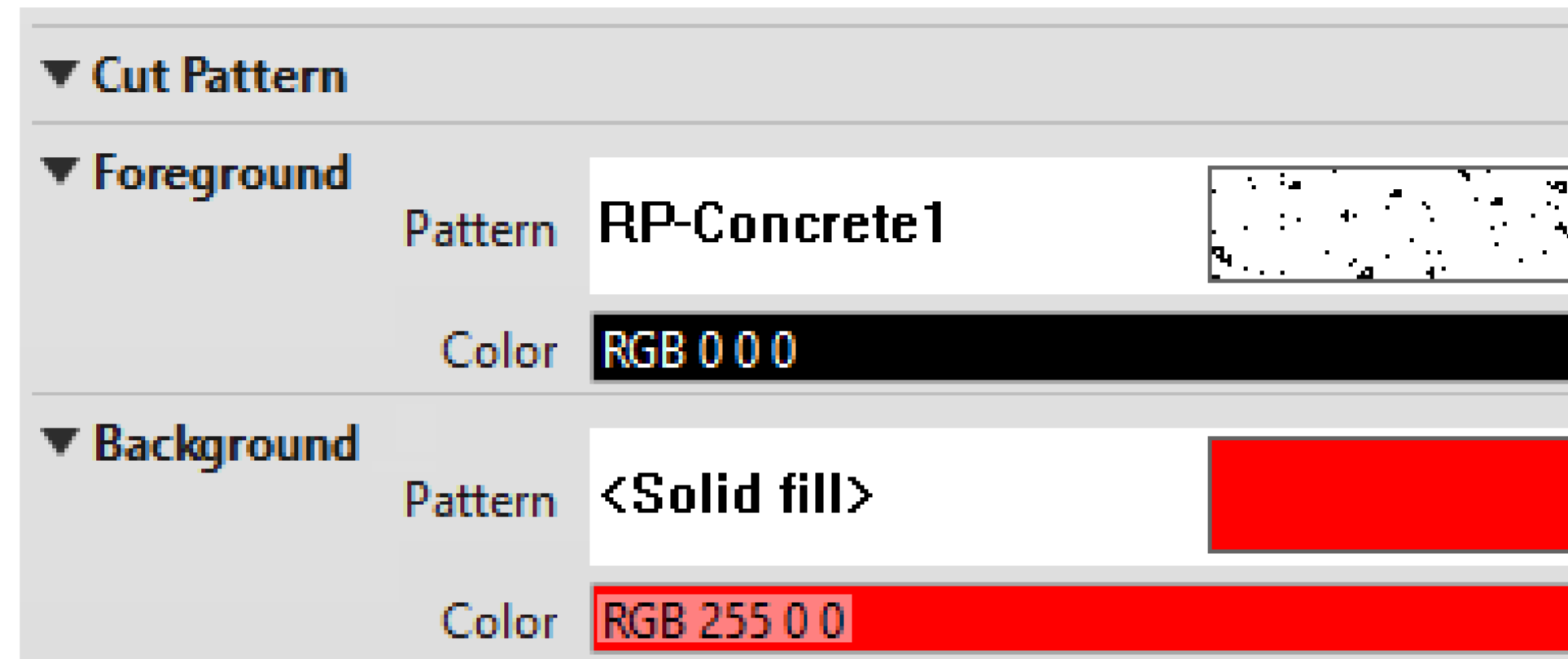
 Realistic

 Raytrace



REVIT PURE LIVE #009
NICOLAS CATELLIER

COLORS IN HIDDEN LINE VIEWS

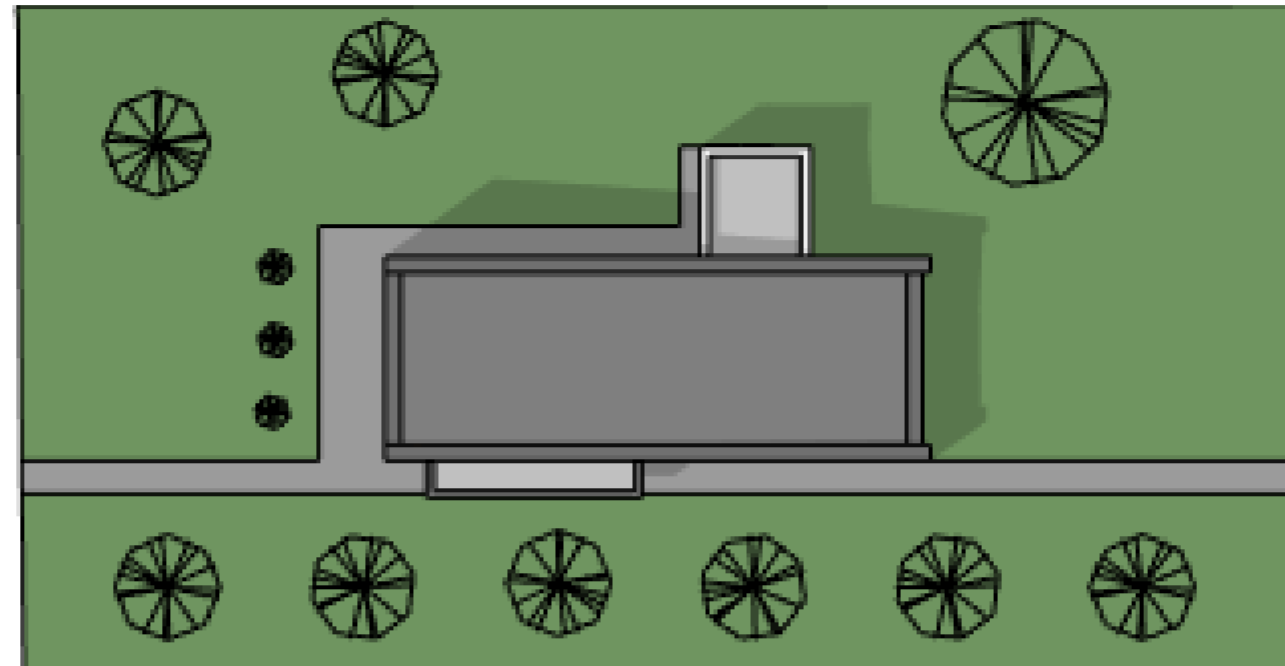


CUT COLUMNS BECOME RED

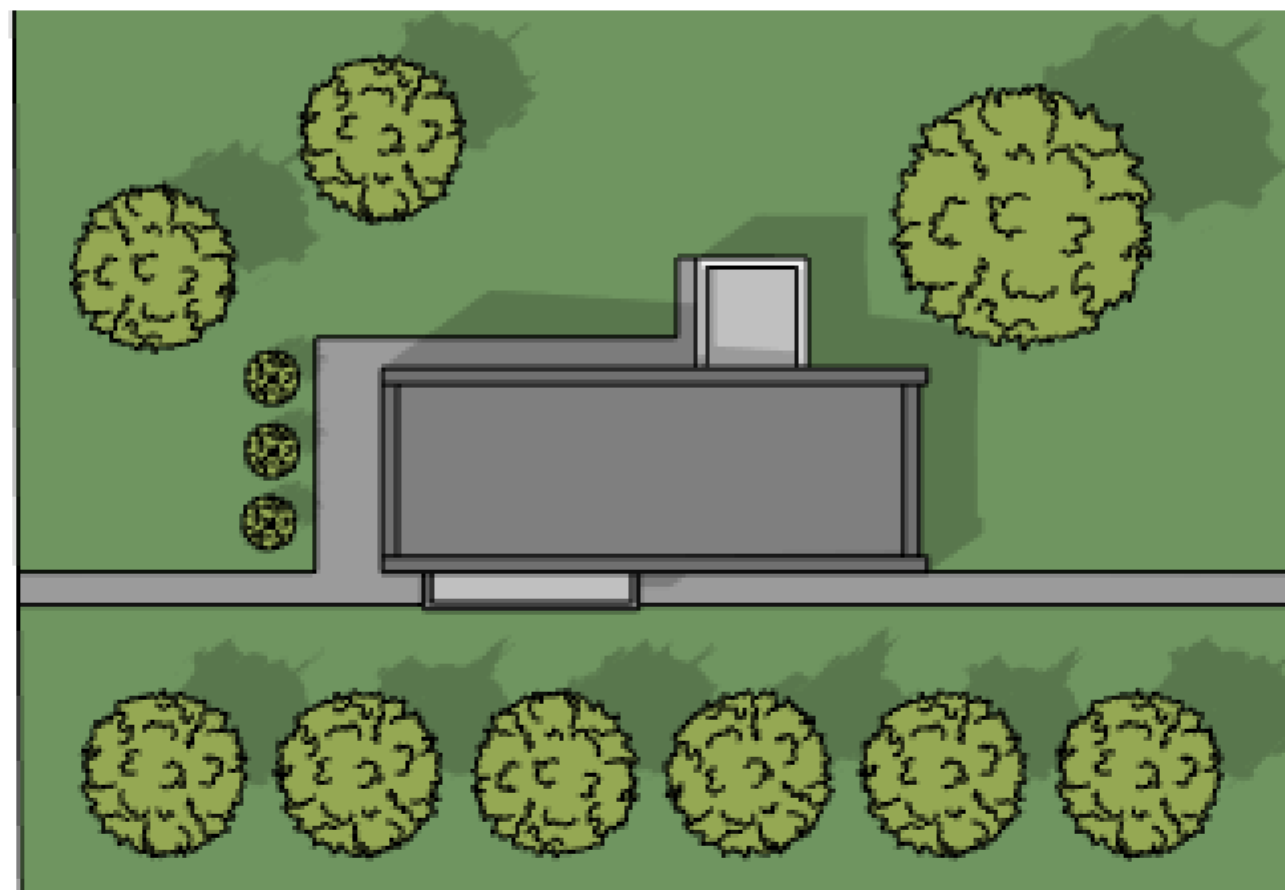


REVIT PURE LIVE #009
NICOLAS CATELLIER

GOOD LOOKING PLANTING



SITE PLAN WITH DEFAULT REVIT PLANTING

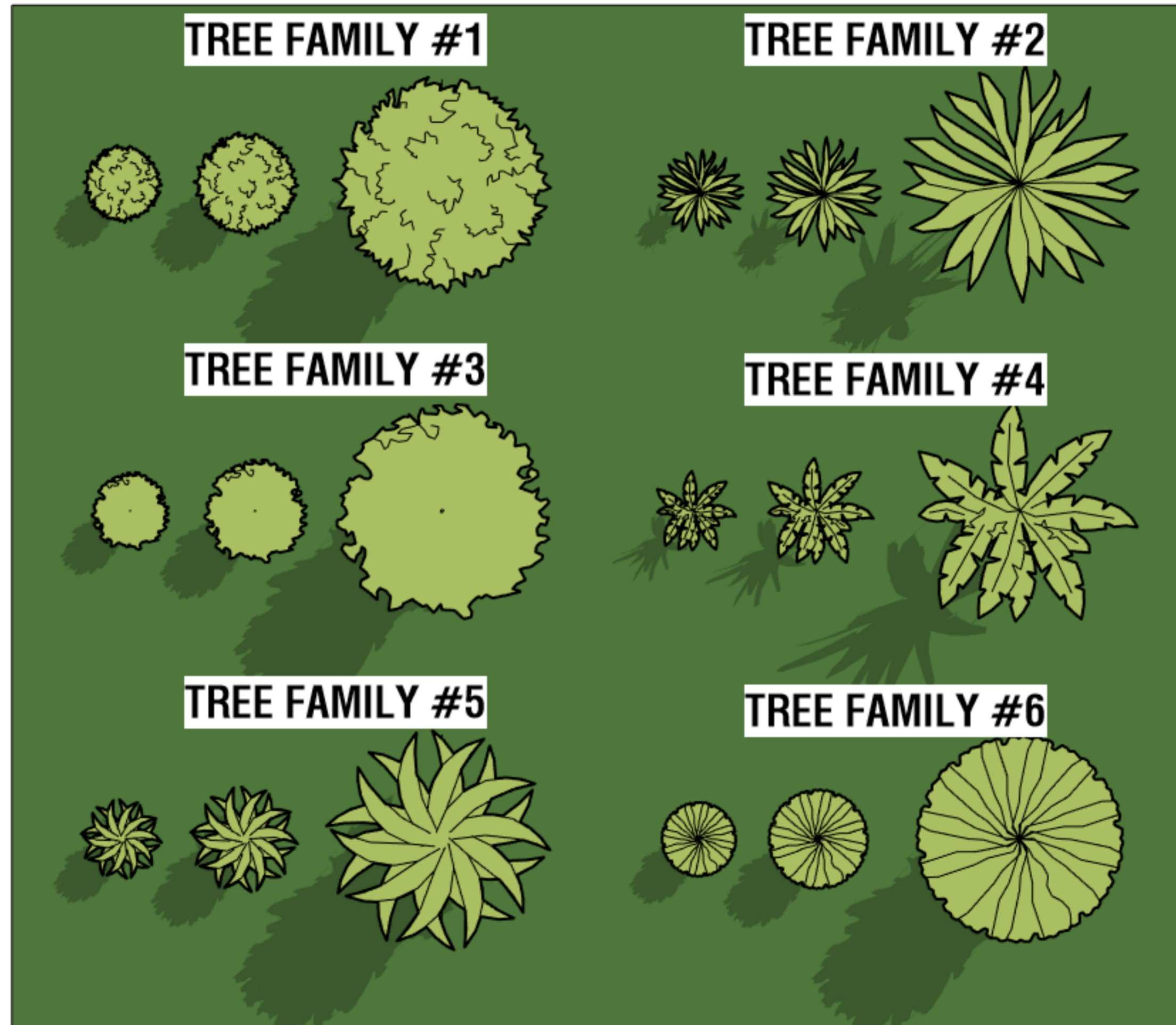


SITE PLAN WITH MODIFIED REVIT PLANTING



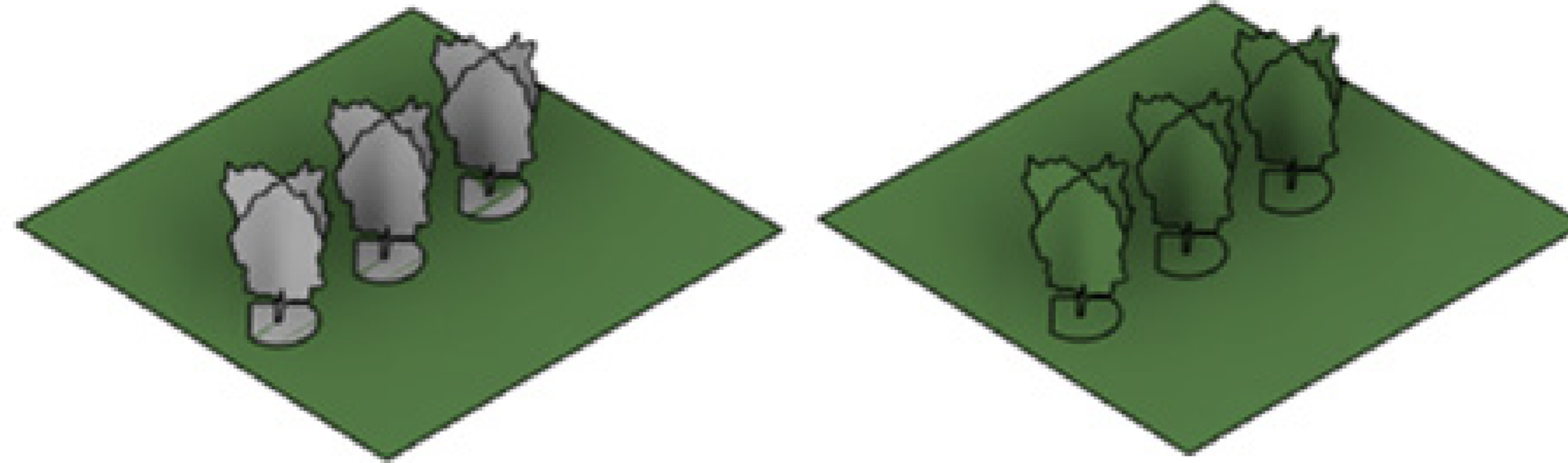
REVIT PURE LIVE #009
NICOLAS CATELLIER

TREE FAMILIES

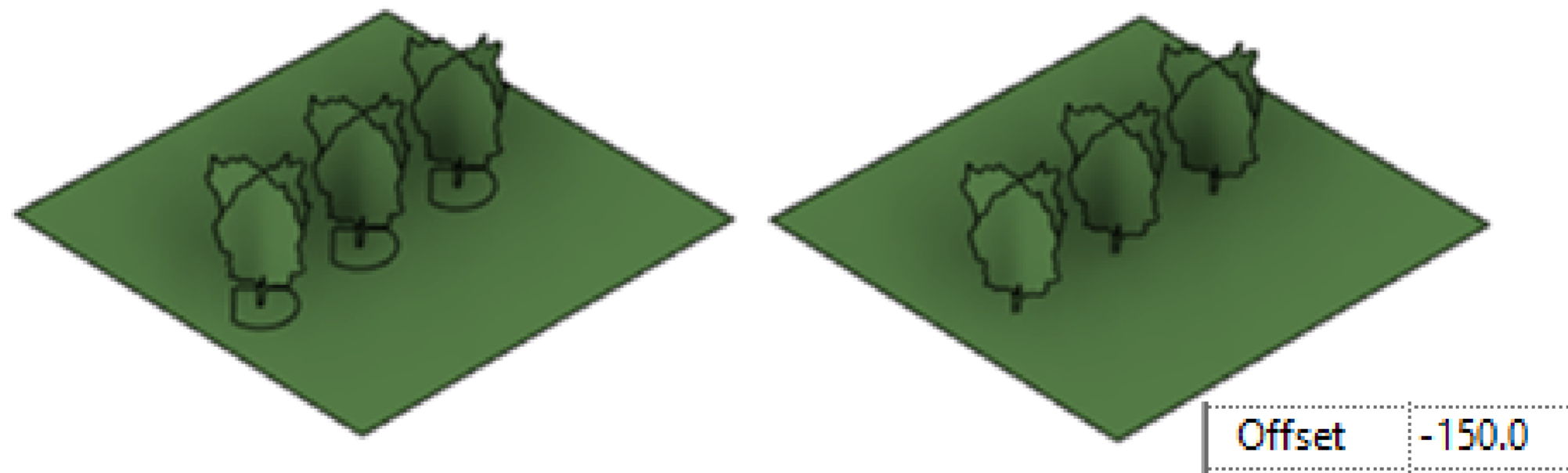


REVIT PURE LIVE #009
NICOLAS CATELLIER

ADJUSTING DEFAULT 3D TREES



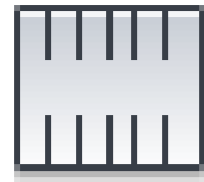
CHANGE THE COLOR OF THE TREE FAMILY



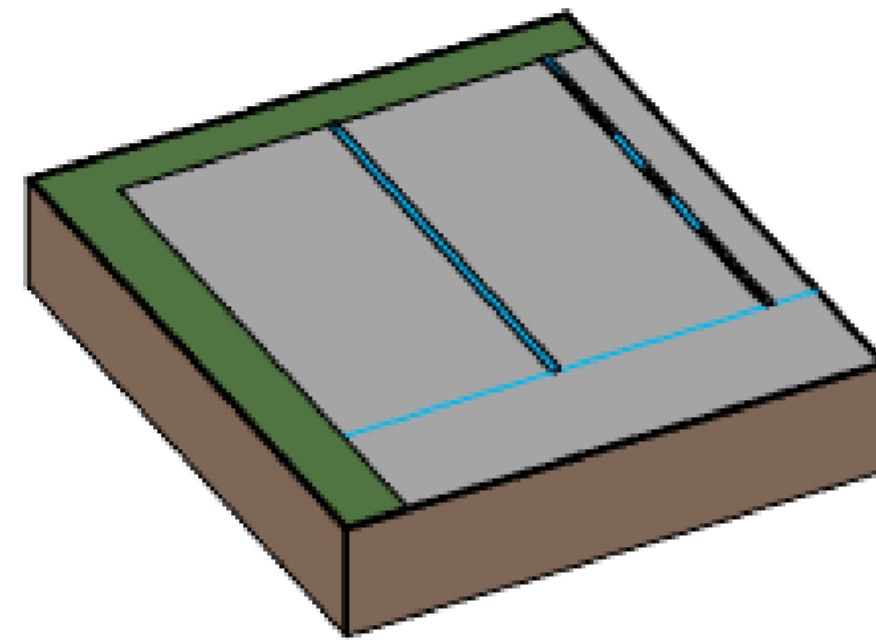
SET A NEGATIVE OFFSET TO ALL THE TREES



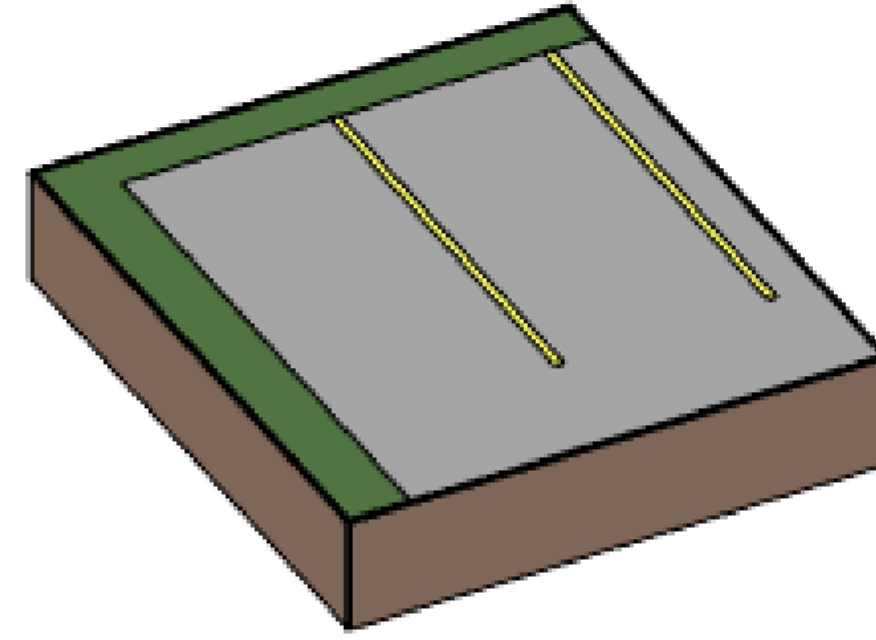
REVIT PURE LIVE #009
NICOLAS CATELLIER



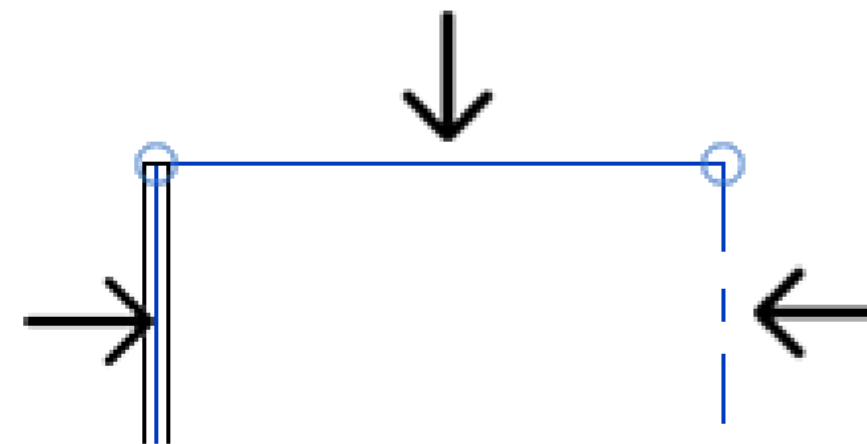
IMPROVING THE DEFAULT PARKING LINE



DEFAULT PARKING LINE

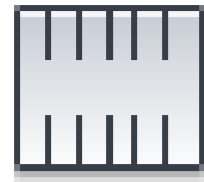


IMPROVED PARKING LINE



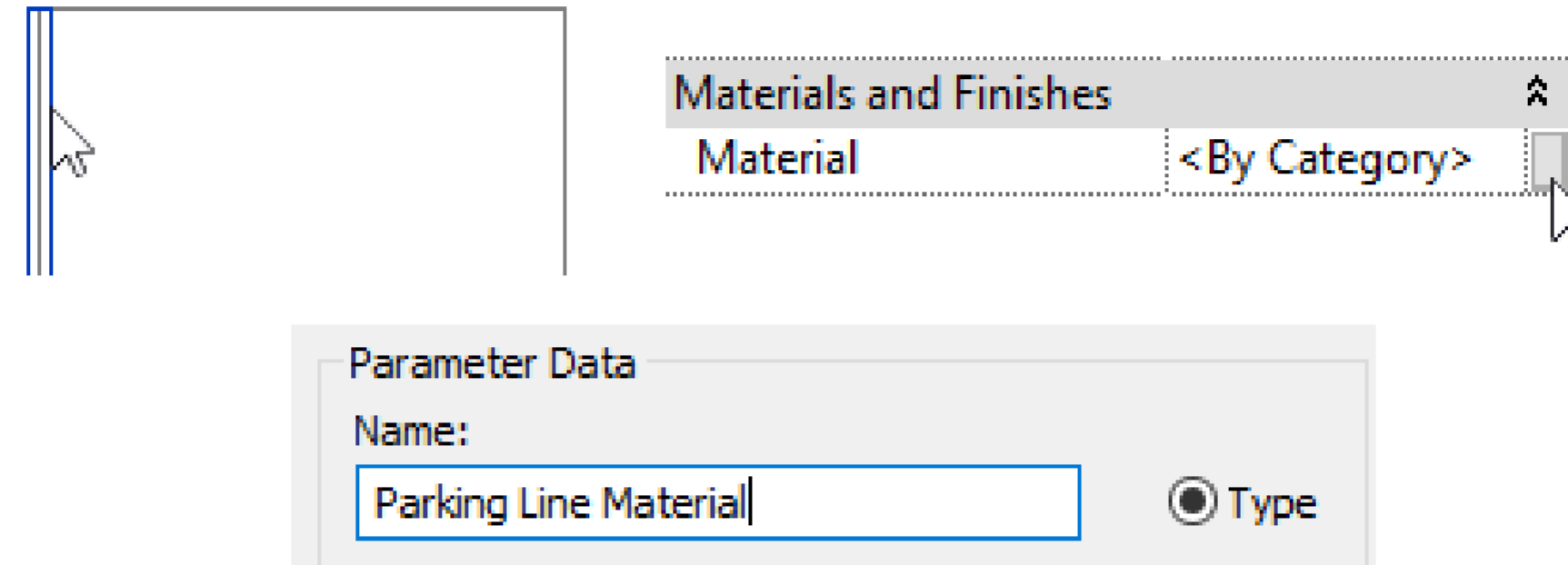
CHANGE LINestyle TO
<INVISIBLE LINE>



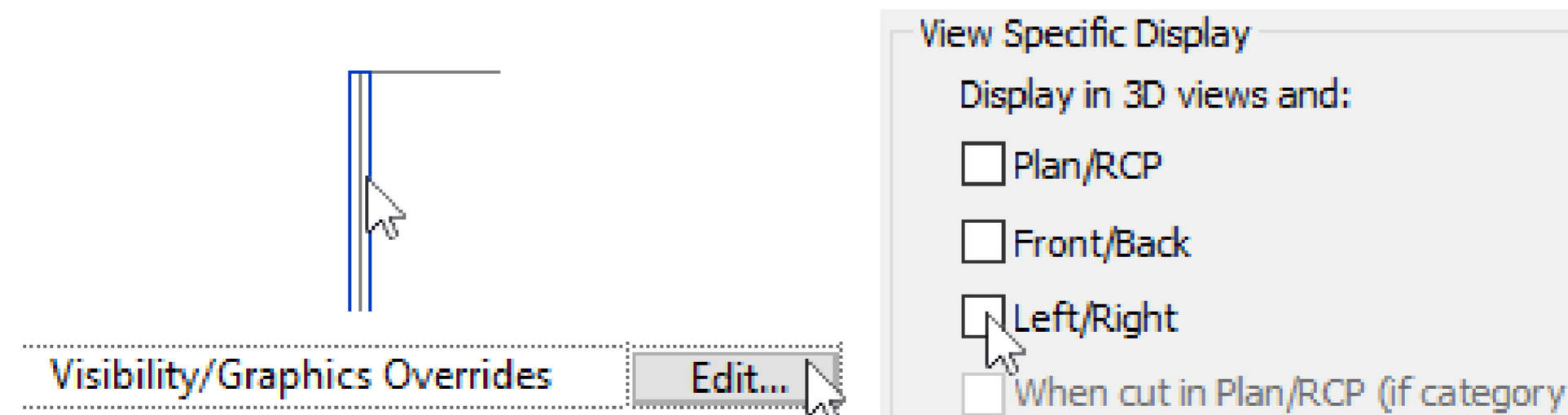


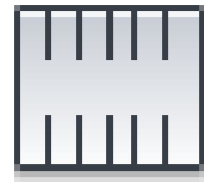
IMPROVING THE DEFAULT PARKING LINE

SET MATERIAL PARAMETER TO THE PARKING STRIPE



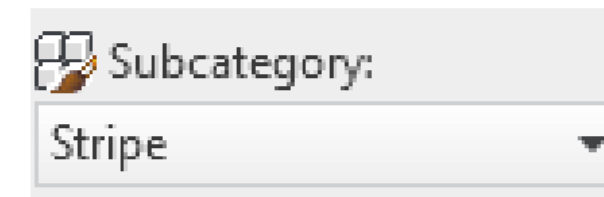
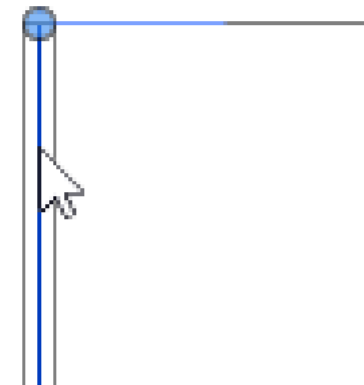
ADJUST VISIBILITY SETTING TO PARKING STRIPE





IMPROVING THE DEFAULT PARKING LINE

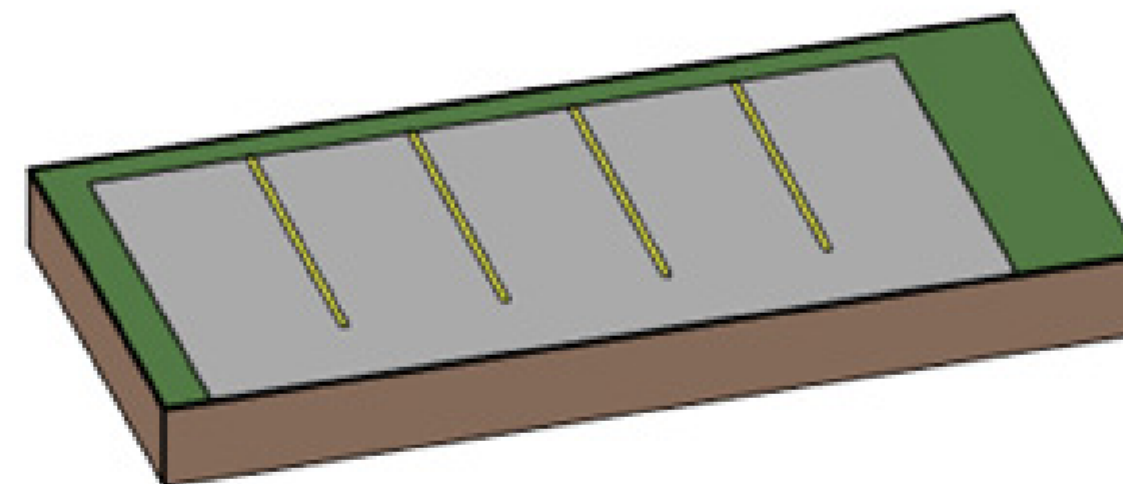
CREATE A SYMBOLIC LINE FOR PLAN VIEWS



CONVERT TO
SYMBOLIC LINE



SET TO "STRIPE"
SUBCATEGORY

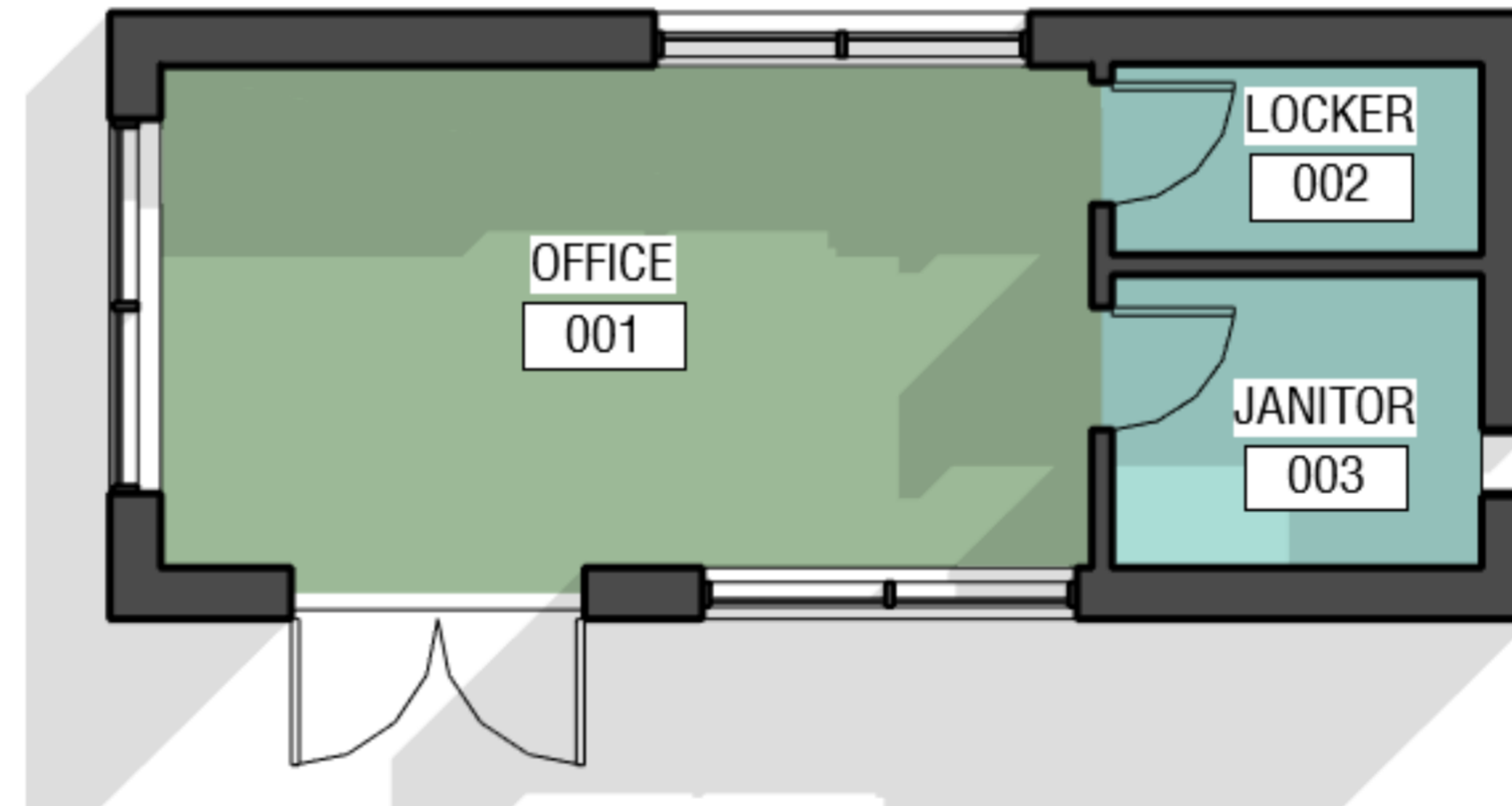
LOAD THE FAMILY, SET A PARKING LINE MATERIAL



REVIT PURE LIVE #009
NICOLAS CATELLIER

COLOR FILL LEGEND SCHEDULE INFO

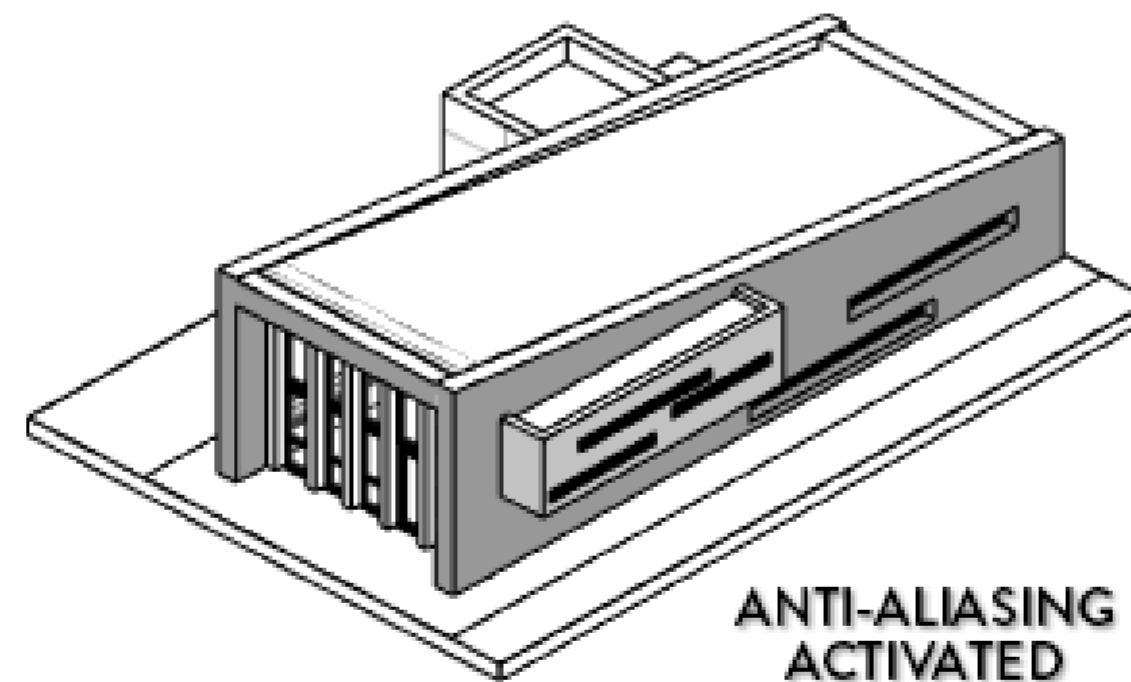
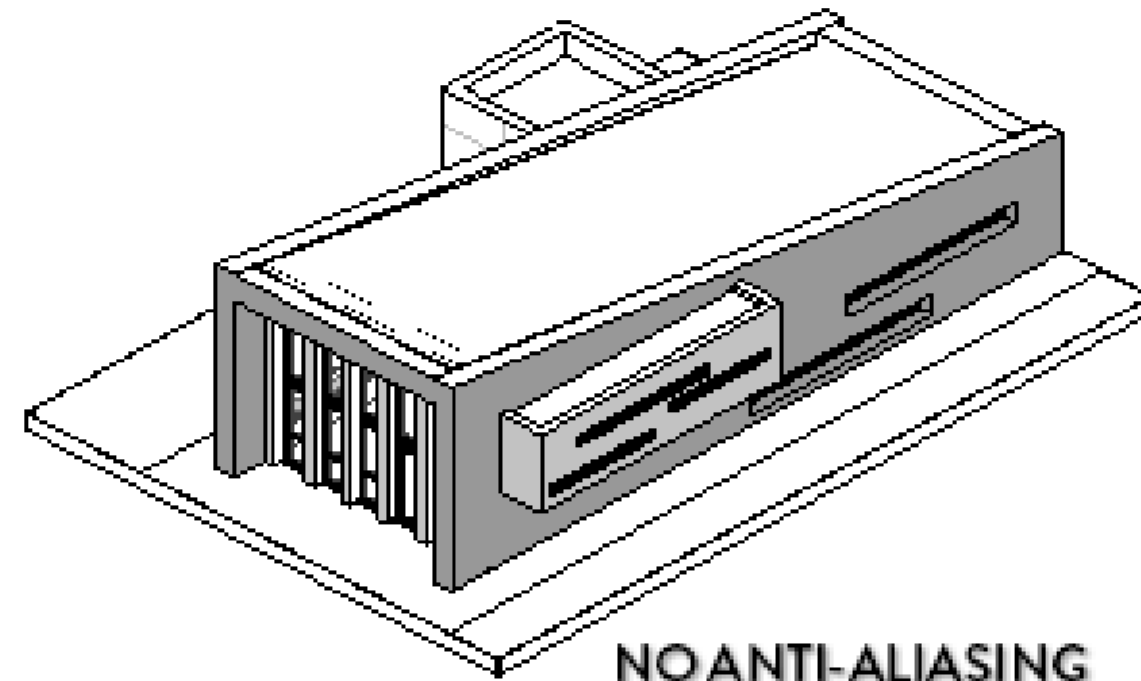
ROOM AREA SCHEDULE			
COLOR	OCCUPANCY	AREA	PERCENTAGE
	OFFICE	18 m ²	72%
	TECHNICAL	7 m ²	28%
GRAND TOTAL		24 m ²	100%



REVIT PURE LIVE #009
NICOLAS CATELLIER

TIPS TO CREATE BEAUTIFUL 3D VIEWS

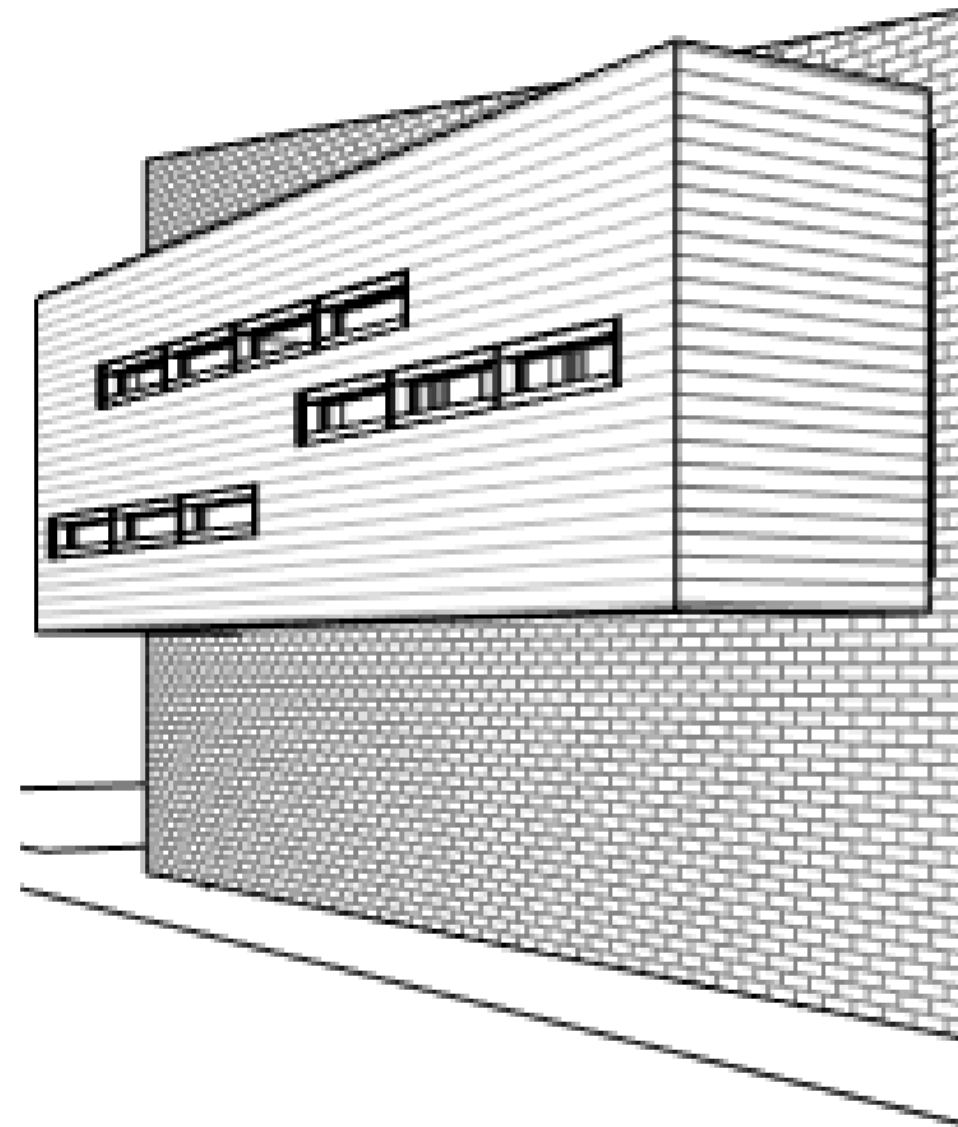
ACTIVATE ANTI-ALIASING



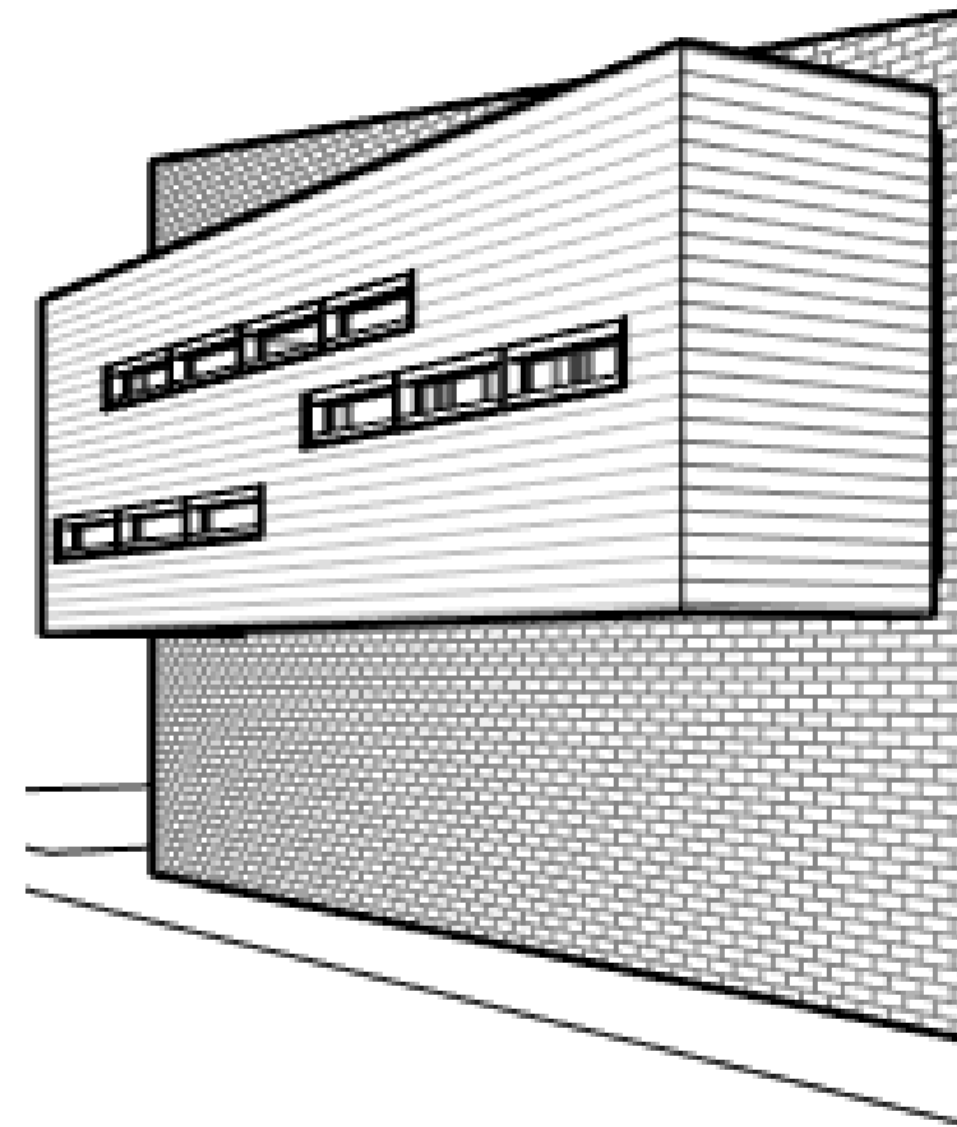
REVIT PURE LIVE #009
NICOLAS CATELLIER

TIPS TO CREATE BEAUTIFUL 3D VIEWS

ACTIVATE SILHOUETTES



NO SILHOUETTES



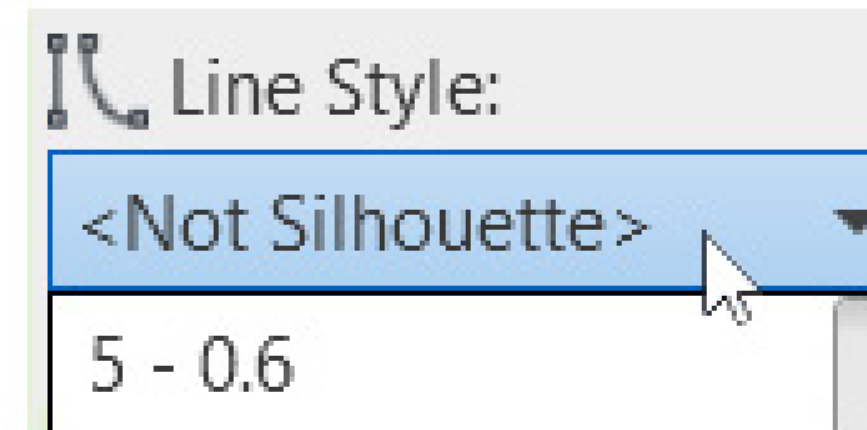
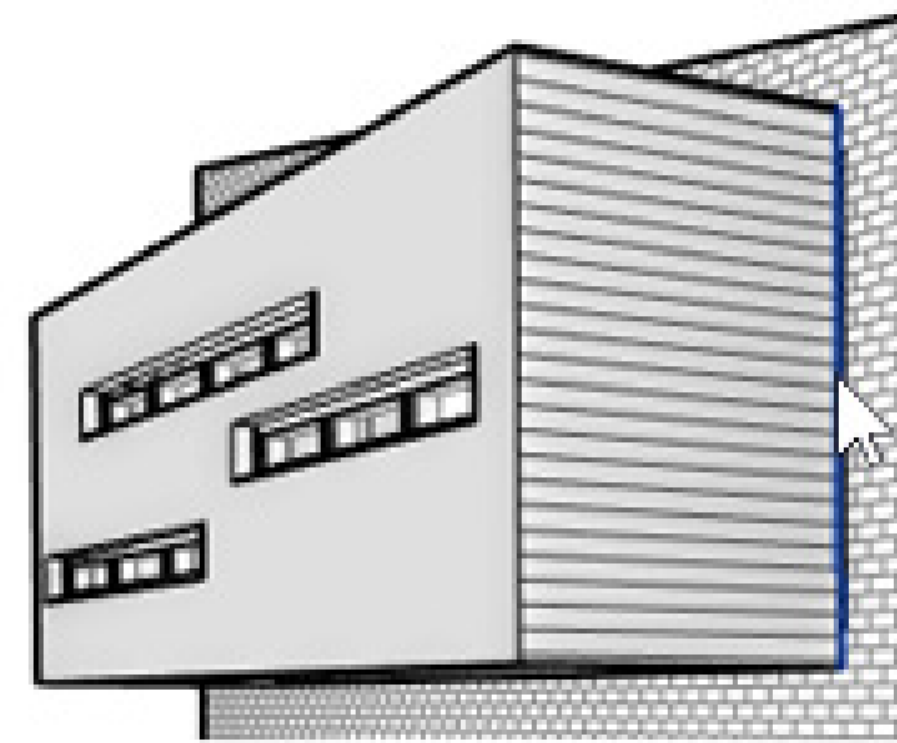
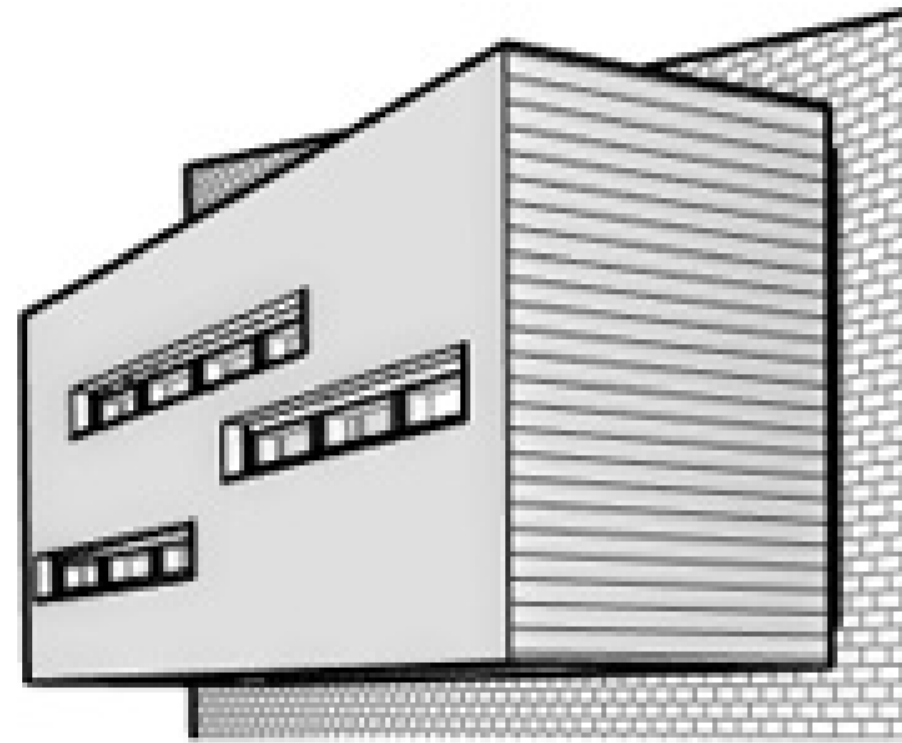
SILHOUETTES ACTIVATED



REVIT PURE LIVE #009
NICOLAS CATELLIER

TIPS TO CREATE BEAUTIFUL 3D VIEWS

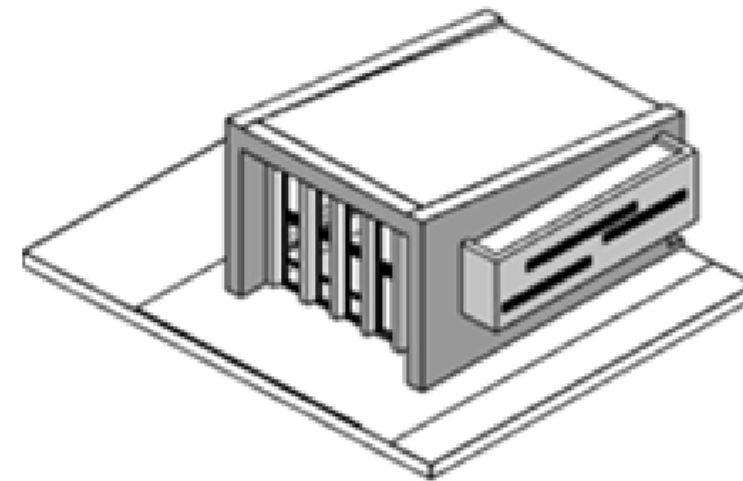
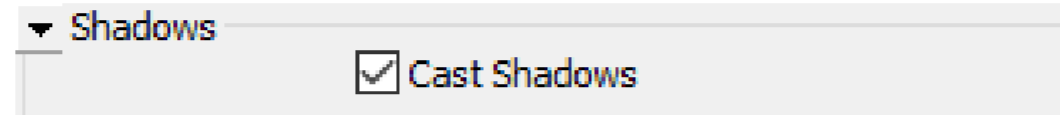
USE LINEWORK FOR MORE LINEWEIGHT PRECISION



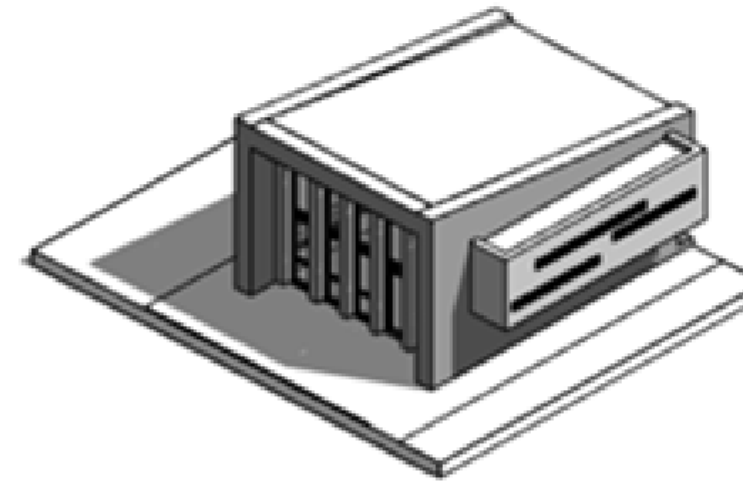
REVIT PURE LIVE #009
NICOLAS CATELLIER

TIPS TO CREATE BEAUTIFUL 3D VIEWS

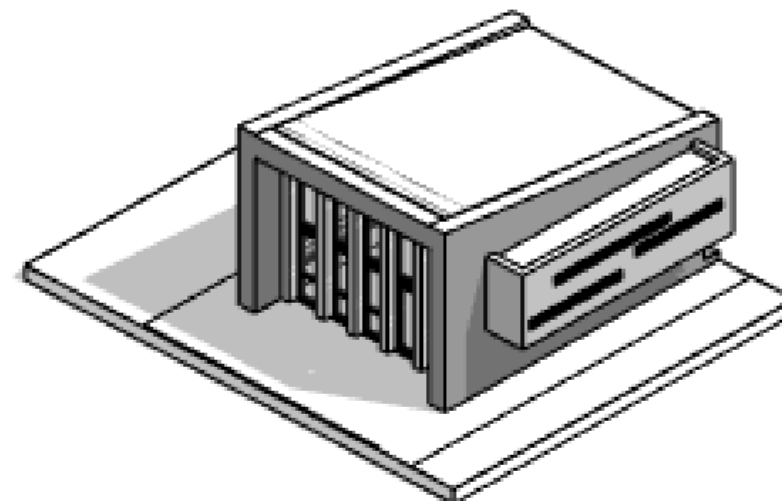
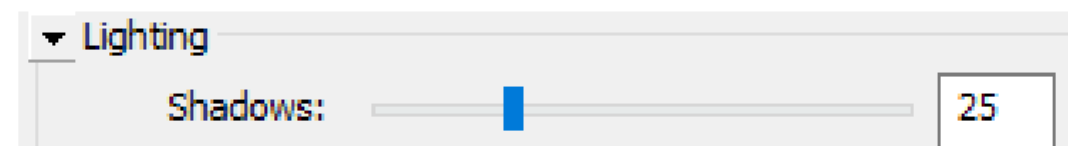
ACTIVATE CAST SHADOWS



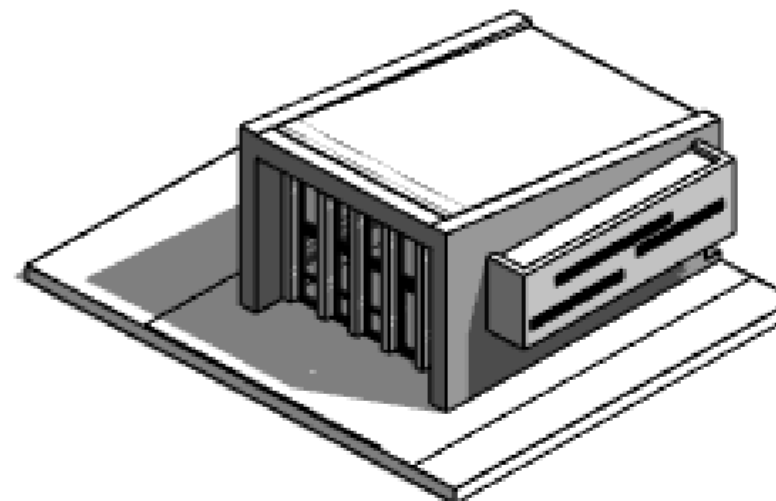
NO SHADOWS



CAST SHADOWS



SHADOWS LEVEL: 25

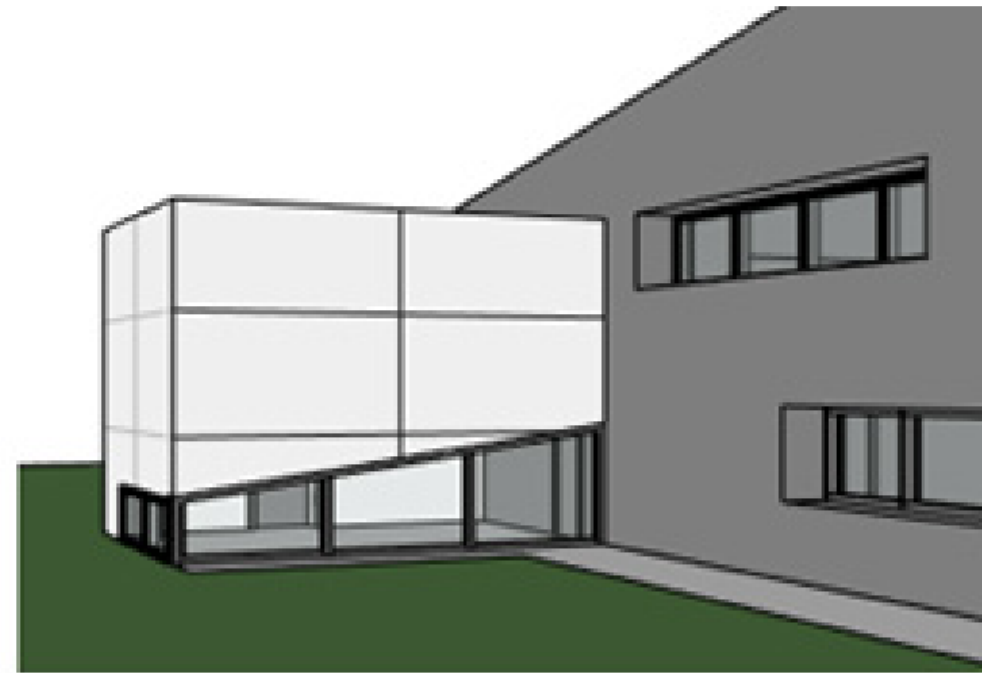


SHADOWS LEVEL: 50

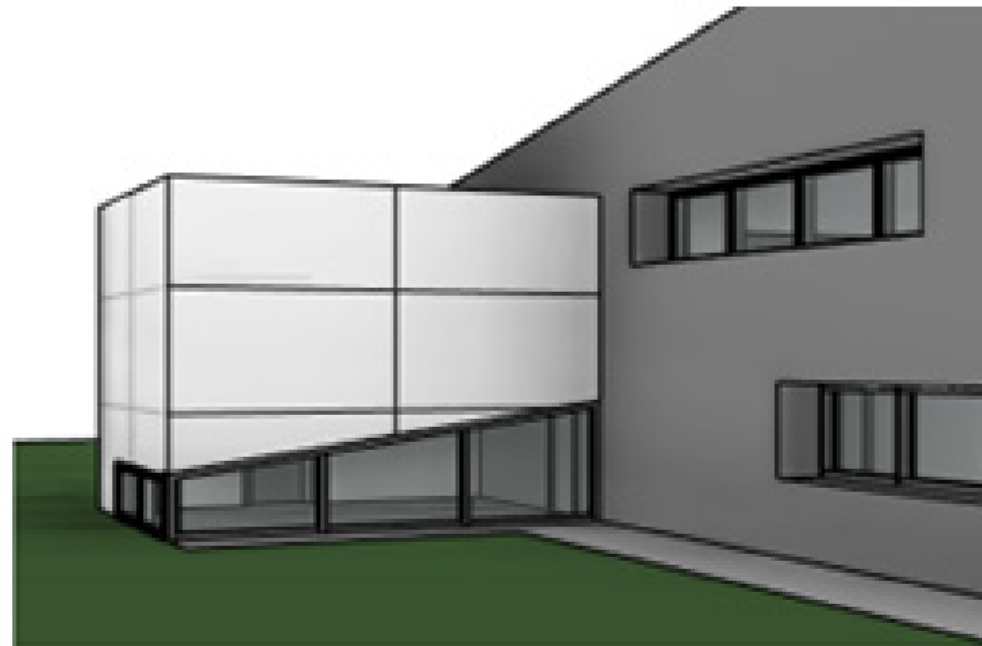


TIPS TO CREATE BEAUTIFUL 3D VIEWS

ACTIVATE AMBIENT SHADOWS



NO AMBIENT SHADOWS



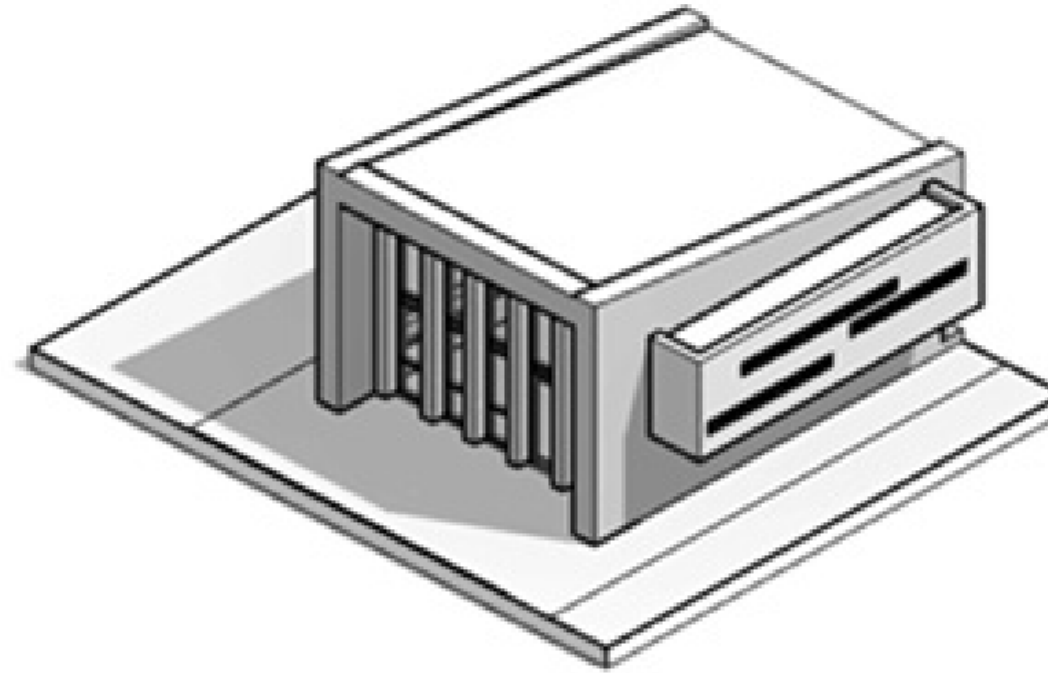
AMBIENT SHADOWS ACTIVATED



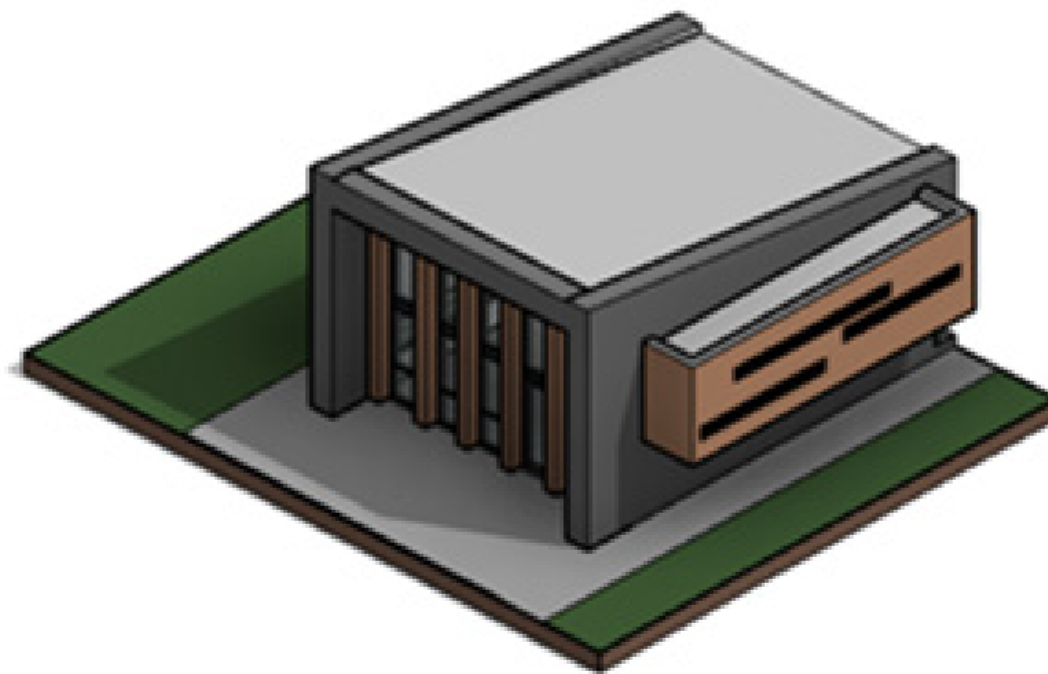
REVIT PURE LIVE #009
NICOLAS CATELLIER

TIPS TO CREATE BEAUTIFUL 3D VIEWS

USE CONSISTENT COLORS STYLE



 HIDDEN LINE STYLE



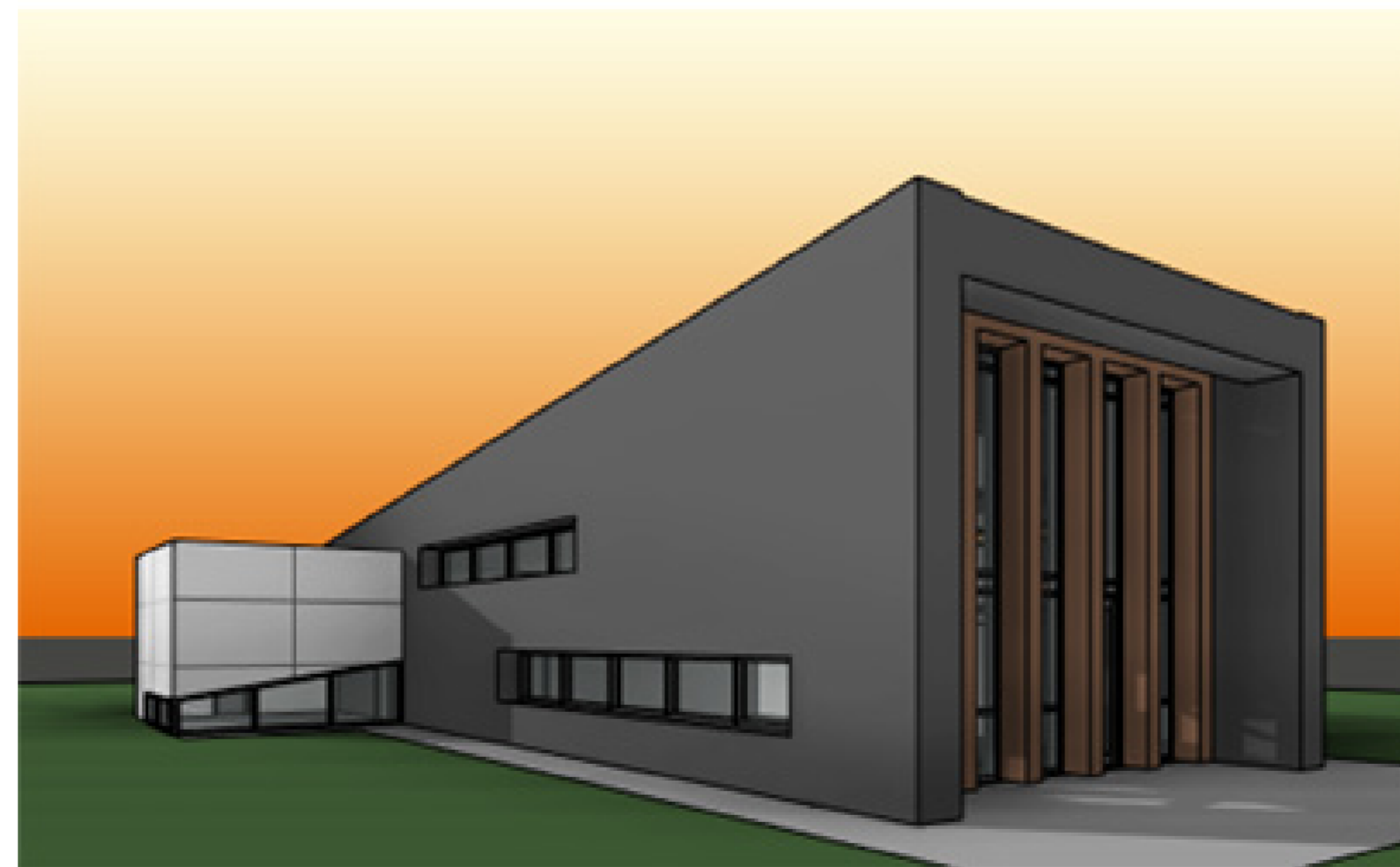
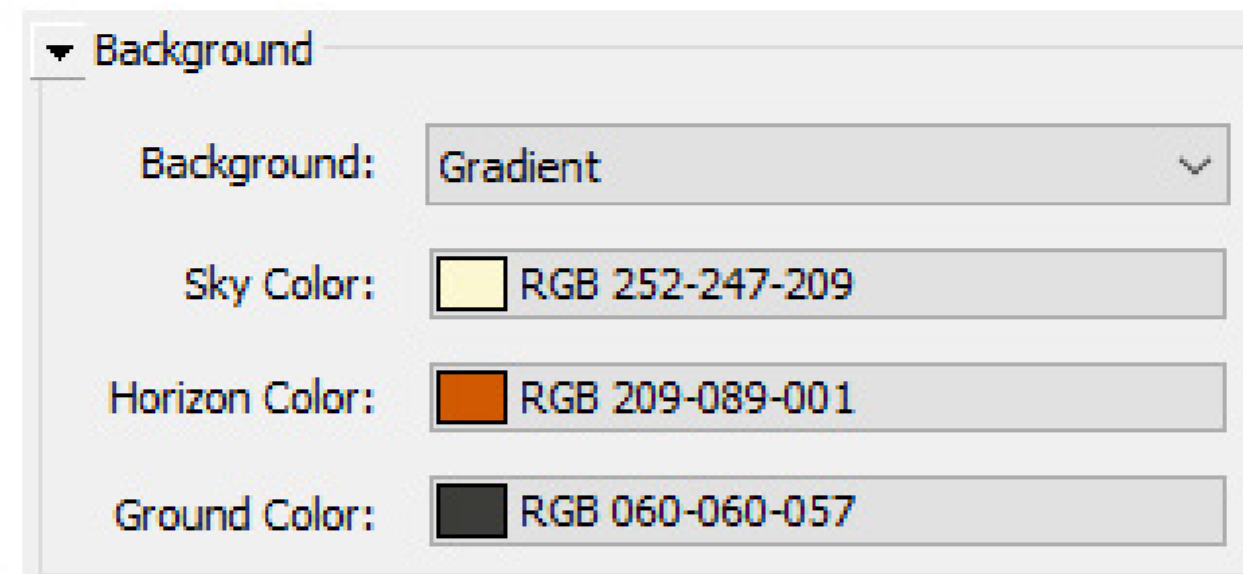
 CONSISTENT COLORS STYLE



REVIT PURE LIVE #009
NICOLAS CATELLIER

TIPS TO CREATE BEAUTIFUL 3D VIEWS

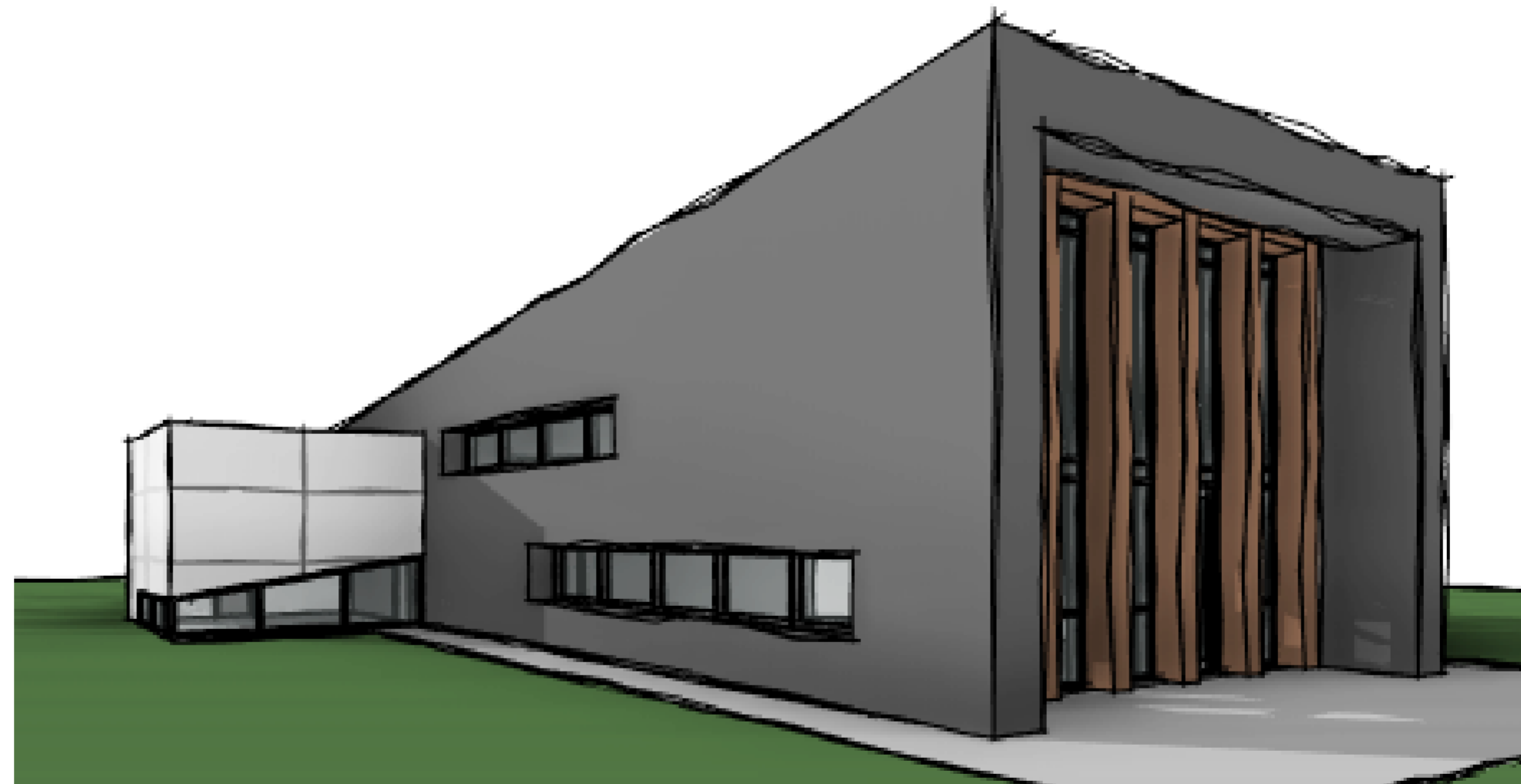
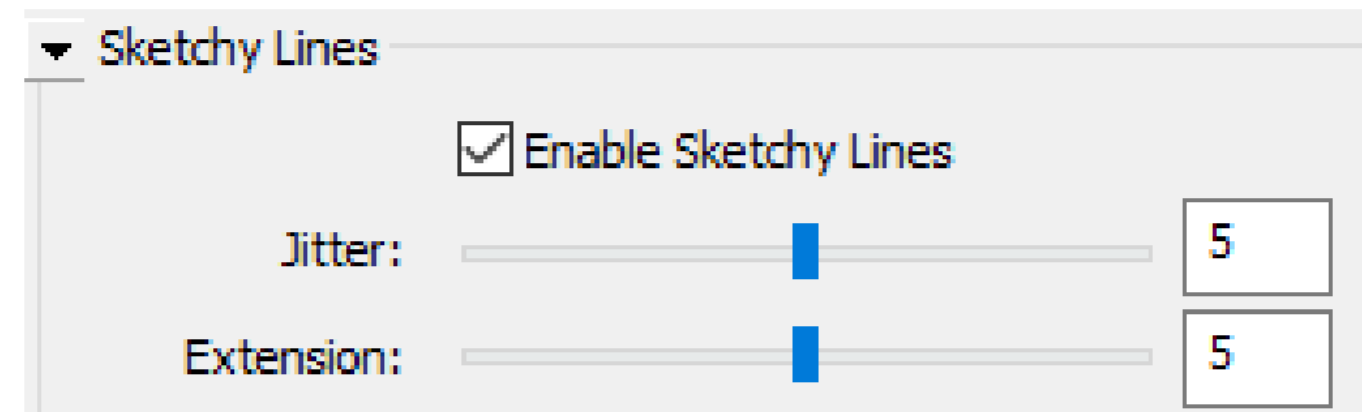
HAVE FUN WITH THE GRADIENT BACKGROUND



REVIT PURE LIVE #009
NICOLAS CATELLIER

TIPS TO CREATE BEAUTIFUL 3D VIEWS

TRY SKETCHY LINES FOR CONCEPTUAL VIEWS



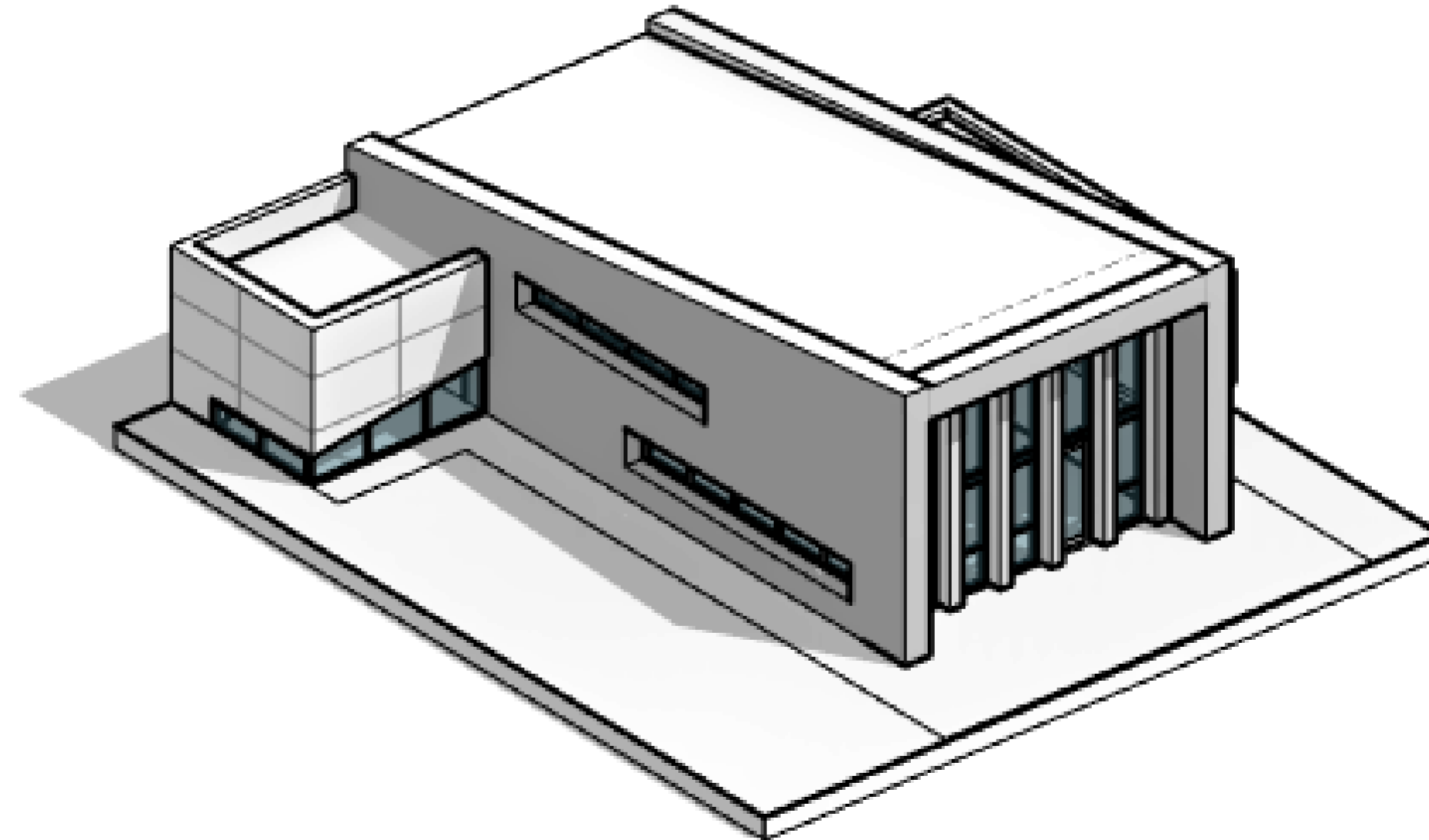
SKETCHY LINES ACTIVATED



REVIT PURE LIVE #009
NICOLAS CATELLIER

TIPS TO CREATE BEAUTIFUL 3D VIEWS

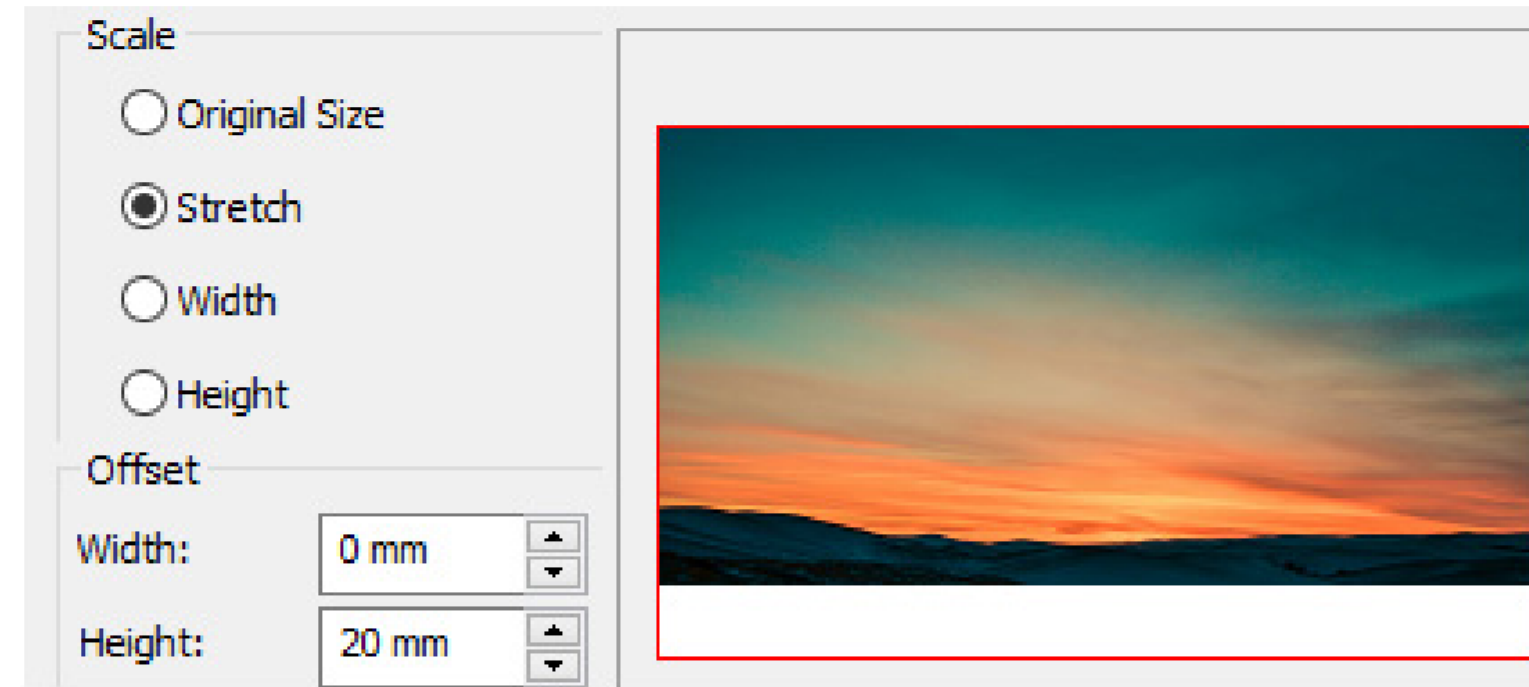
USE HIDDEN LINE STYLE WITH MATERIALS ACCENT



REVIT PURE LIVE #009
NICOLAS CATELLIER

TIPS TO CREATE BEAUTIFUL 3D VIEWS

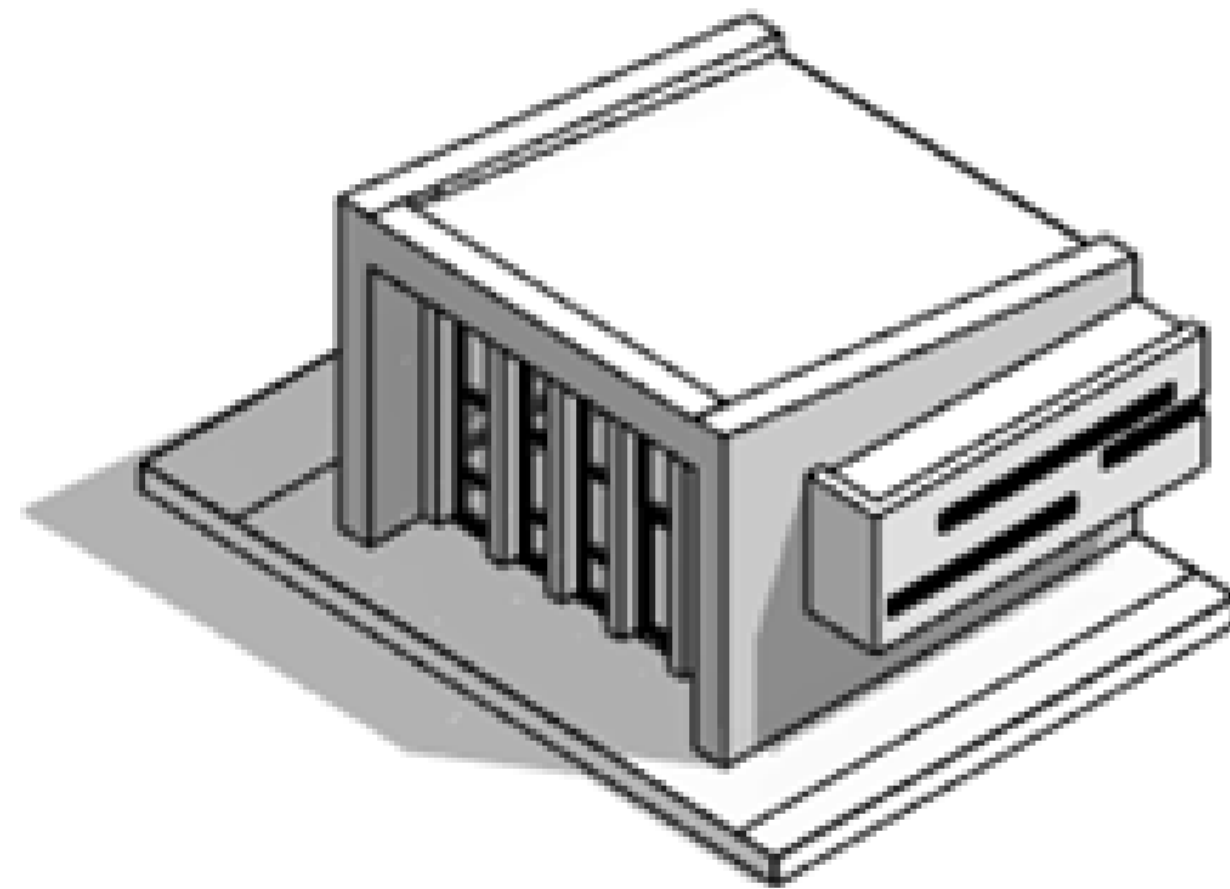
USE AN IMAGE BACKGROUND



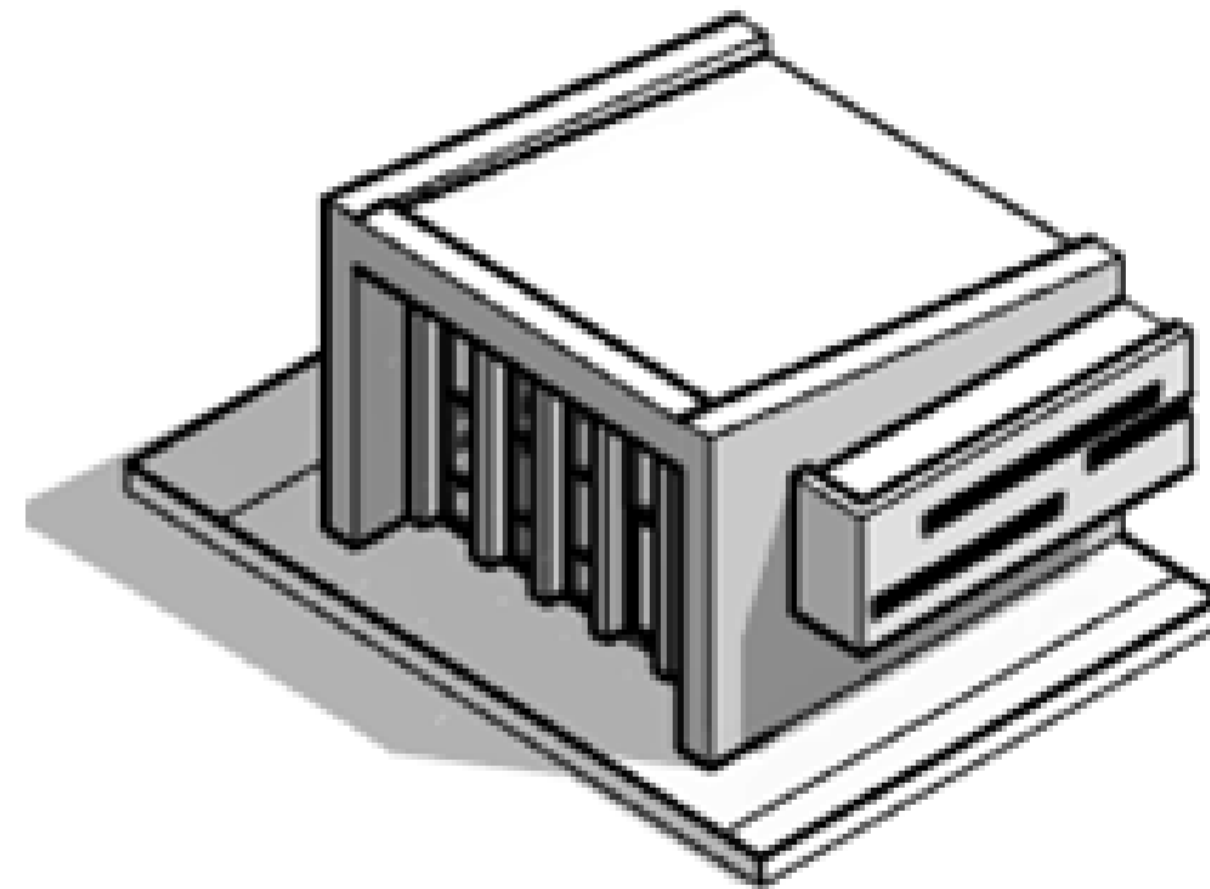
REVIT PURE LIVE #009
NICOLAS CATELLIER

TIPS TO CREATE BEAUTIFUL 3D VIEWS

CHANGE THE VIEW SCALE



VIEW SCALE: 1:100

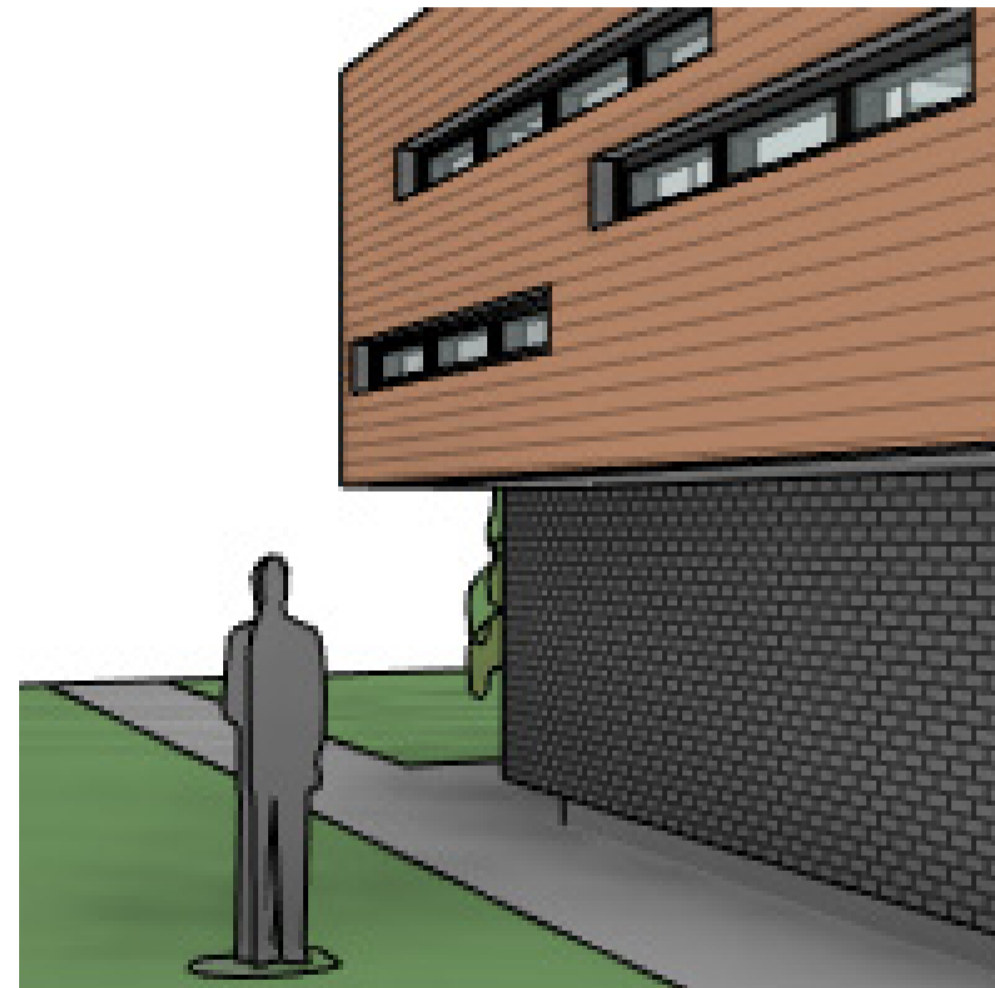


VIEW SCALE: 1:200

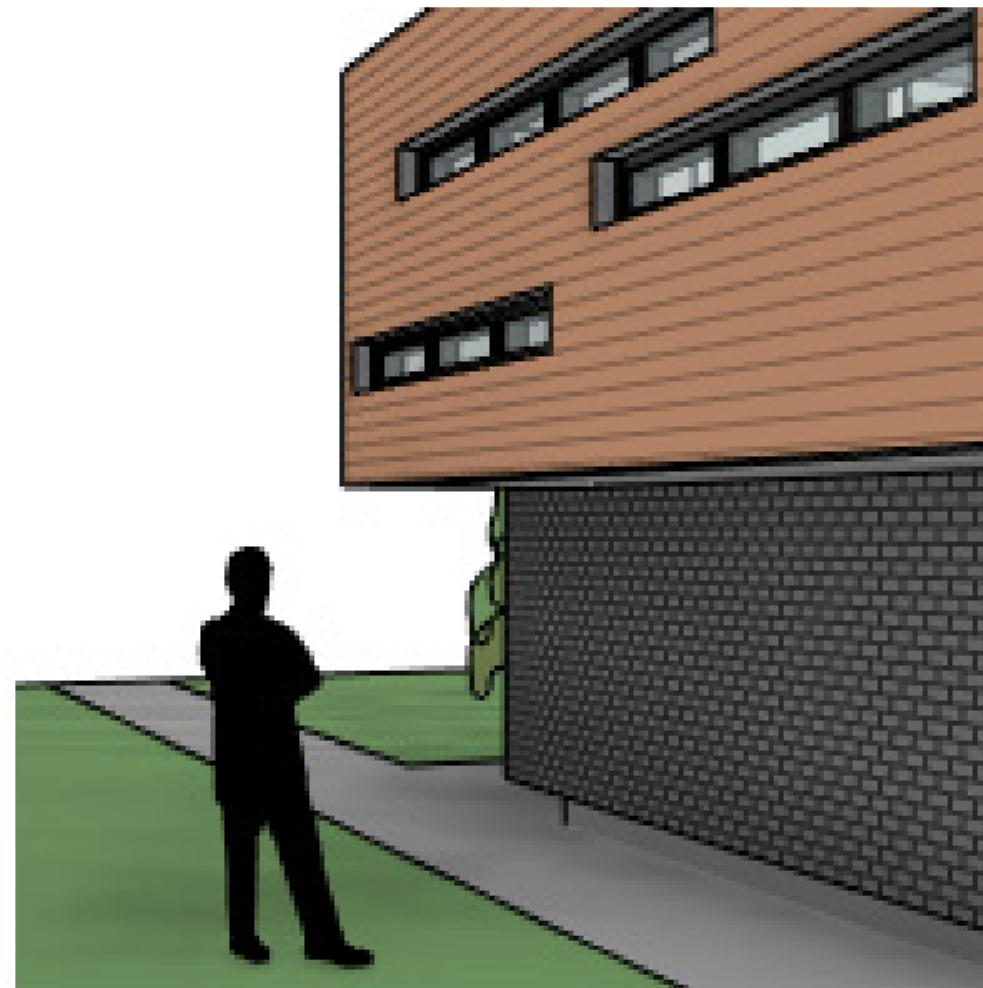


REVIT PURE LIVE #009
NICOLAS CATELLIER

CREATING BEAUTIFUL ENTOURAGE



DEFAULT ENTOURAGE

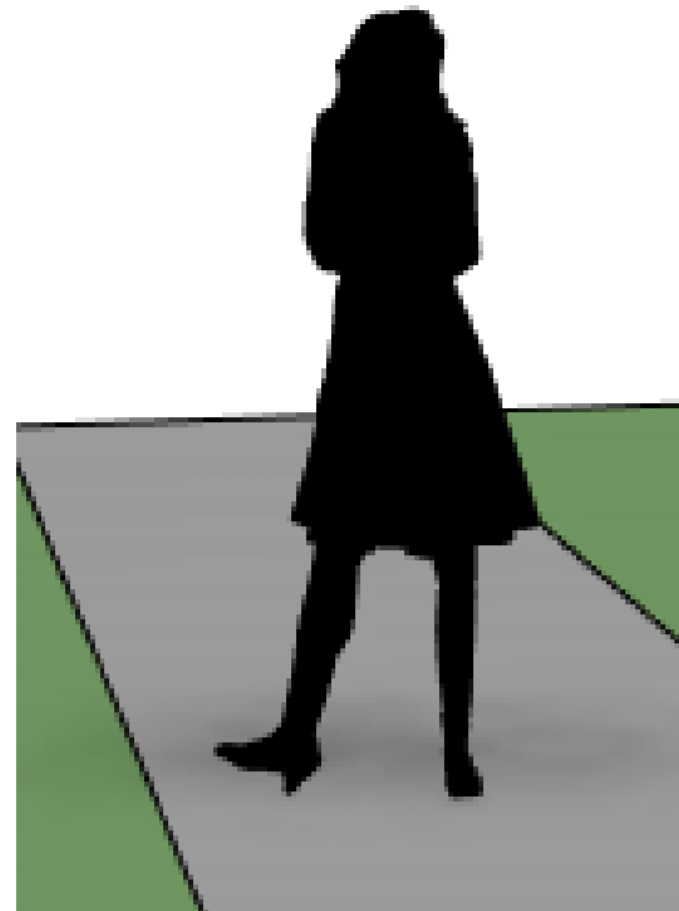


MODIFIED ENTOURAGE



REVIT PURE LIVE #009
NICOLAS CATELLIER

CREATING BEAUTIFUL ENTOURAGE



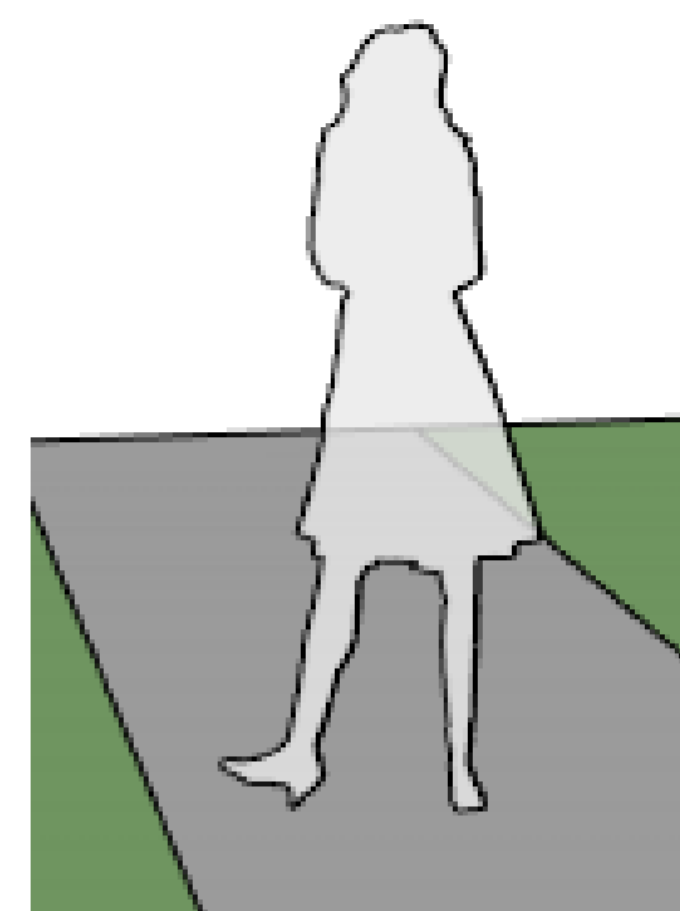
STYLE #1

Visibility	
Visibility DWG	<input type="checkbox"/>
Visibility RPC	<input type="checkbox"/>
Visibility Silhouette	<input checked="" type="checkbox"/>



STYLE #2

Visibility	
Visibility DWG	<input checked="" type="checkbox"/>
Visibility RPC	<input type="checkbox"/>
Visibility Silhouette	<input checked="" type="checkbox"/>

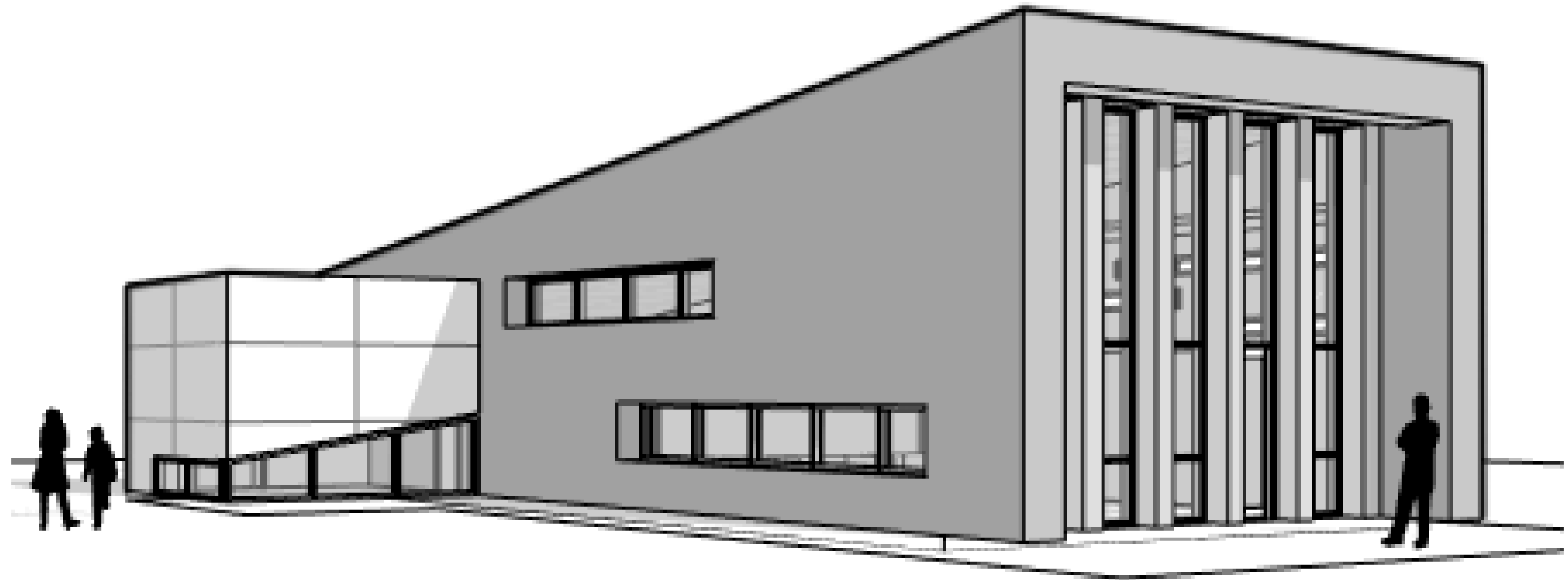


STYLE #3

Visibility	
Visibility DWG	<input type="checkbox"/>
Visibility RPC	<input type="checkbox"/>
Visibility Silhouette	<input checked="" type="checkbox"/>



CREATING BEAUTIFUL ENTOURAGE

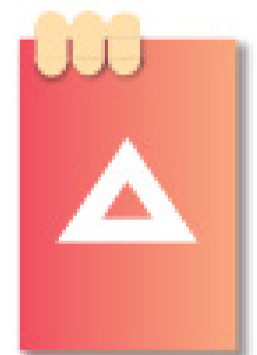
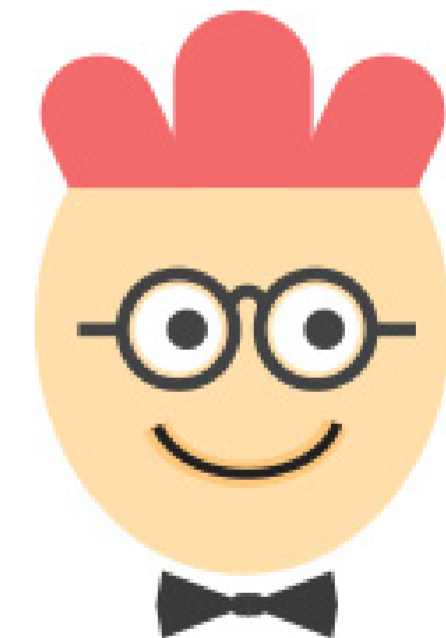


REVIT PURE LIVE #009
NICOLAS CATELLIER

DESIGN LEARNING PACKAGE



- eBOOK
- VIDEO TUTORIALS
- TEMPLATE FOR PRESENTATION
- ENTOURAGE FAMILIES
- TREE FAMILIES
- PARKING LINE FAMILY
- MATERIALS READY FOR RENDERINGS
- PRESENTATION VIEW TEMPLATES



REVIT PURE LIVE #009
NICOLAS CATELLIER